

# BIG SCHOOL

2025-2026

OPEN DAYS

TYPES OF  
SCHOOLS

OFSTED  
EXPLAINED

ADMISSIONS  
PROCESS

SCHOOLS  
BY REGION



[www.bigschoolmidlands.co.uk](http://www.bigschoolmidlands.co.uk)

YOUR FREE EXPERT GUIDE TO CHOOSING THE RIGHT SECONDARY SCHOOL

# Phoenix

Broadening Horizons to **Aspire, Believe, Succeed**



We  
**Aspire**



We  
**Believe**



We  
**Succeed**

## OPEN EVENTS 2025

### OPEN EVENING

Thursday 18th September 2025 4.00 – 7.00pm

### OPEN MORNINGS

Monday 22nd September to Friday 3rd October 2025 9am-11am  
(by appointment only)



Our 2023 Ofsted inspection rated us **GOOD** in all areas.

Quality of Education

Behaviour and Attitudes

Sixth Form Provision

Personal Development

Leadership and Management

[www.aspirebelievesucceed.com](http://www.aspirebelievesucceed.com)

## The Phoenix Collegiate

Clarkes Lane, West Bromwich, West Midlands, B71 2BX T: 0121 588 8384

E: [info@phoenix.sandwell.sch.uk](mailto:info@phoenix.sandwell.sch.uk)

# BIG SCHOOL

2025-2026

**EDITORIAL**

Vicki Jones

vicki.jones@mnamedia.co.uk

Heather Large

heather.large@mnamedia.co.uk

**SENIOR ACCOUNT MANAGER**

Tracy Baker

tracy.baker@expressandstar.co.uk

**ADVERTISEMENT MANAGER**

Petra Emmerson

petra.emmerson@expressandstar.co.uk

**PUBLISHED BY**

Midland News Association

**PRINTED BY**

Precision Colour Printing,  
Halesfield, Telford  
TF7 4QQ

A commercial publication



# WELCOME

**Welcome to Big School – your comprehensive guide to the next step of your child’s education.**

In this magazine you will find detailed advice on how to choose the perfect secondary school for your son or daughter. This is where they will spend a large proportion of the next five years and that’s why it’s so important to find a place where they will be happy and thrive.

Our guide details all of the factors you will need to consider when comparing different schools as well as information on the application process.

When looking at secondary schools, it is vital that you spend time researching the admission criteria for your area as some schools can often be over-subscribed. At the same time you will want to ensure that you know the options available to you if you need to appeal an unsuccessful application.

There are also useful tips to help

your child prepare for life in Year 7 and to make it easier for them to settle in at secondary school so it’s as smooth a transition as possible. This includes the equipment they will need for the classroom as well as options for their lunchtime meals and how they will travel to school each day.

There is also a spotlight on the broad range of schools across the region that are ready to welcome you to their open days over the coming months.

The guide also looks to the future and the qualifications your child will be working towards over the next few years as they continue their education. And there is also information on how you can get involved in their secondary school by becoming a member of the PTA.

Starting ‘Big School’ is a huge milestone for both your child and you as parents and carers and we wish you all the best for the future.

## CONTENTS

4: The next big step

5: Teacher’s advice

6: How to apply

7: Ofsted

8&9: Types of school

10: Open Events

11: Taster Days

12&13: Appeals process

14: Uniforms

15: What subjects?

16&17: Qualifications

18: Extra opportunities

19: Homework

20: Healthy Eating

21: PTA

22: Revision

23: Work Experience

24: Tackle bullying

25: Online safety

26: Fee-paying schools

46: Transport

82: Duke of Edinburgh's Award

.....

27-92: Spotlight on schools



# TAKING THE NEXT STEP IN YOUR CHILD'S EDUCATION

**It will soon be time to embark on the next big stage of your child's life: starting secondary school.**

Choosing the perfect place for your child to start Year 7 can be one of the most difficult decisions that you ever take as a parent.

It is important to thoroughly research all of the options available to you so you find the best fit for your son or daughter.

You will want a school where they are encouraged to achieve and reach their full potential. Councils allow parents to make up to six preferences of schools, depending on where you live, with the final decision made according to the criteria set by the local authority or individual schools.

Although this can feel like a lot of pressure, how you end up choosing your secondary school preferences will probably be very similar to how you found your child's first school – with some of the same factors influencing your decision.

And remember – getting this next step right can help them on the way

later in life and in their future careers.

You might be wondering whether you want a community school or an academy? Do you want to pay for a private education or send your child to a grammar school?

During this important decision-making process, you will be looking at schools to see what teaching and sports facilities they offer pupils.

You will no doubt also be examining the results they go on to achieve, as well as the support offered inside and outside of the classroom.

Schools will soon begin holding open days giving you the chance to have a proper look around and allow your child to get a feel for the place.

Now they are older, they will probably have views on where they want to go, which you will no doubt want to take into consideration.

You might want to consider whether the school caters for the things your child is interested in and what opportunities there will be for them to develop these interests further.

Think about the ethos of the school

– does it match your own culture and values?

More than likely they will want to go where their friends are going. While this probably shouldn't be the sole reason for choosing a school, if your child struggles to make friends and you think they will find it difficult going alone then it can be a worthy consideration.

Above all, you will want to be able to 'see' your child fitting in there.

Proximity will always come into play as nearly all schools will use this as one of the main criteria when considering applications.

So you might have a certain school as number one on your preference list but it will depend on how many other parents have applied and how close they are to its gates.

Having siblings at the school already will also give applications extra weight.

This means it's essential to research your options well – so if you miss out on your preferred choice you will be well-informed on the others.

# HOW YOU CAN HELP YOUR CHILD COPE WITH MOVE

**Chris Green, Vice Principal – Quality of Education at St Regis CofE Academy, shares his tips for parents and children**



**An important milestone in the parental journey is when your child starts at secondary school.**

You will have mixed emotions and so will your son or daughter. Enjoy this transition together!

You will soon come to miss the afternoon pick-up from the playground and all the snippets of information you can gather whilst in the company of other parents and the verbal reports, good and bad, from the Year 6 teacher.

Your child is growing up and you will soon come to rely on them to share their day with you whilst you get used to the numerous apps and online reporting platforms shared by the school.

The induction days in July will have given you peace of mind with some of those important aspects of the new school. You have much information to digest whilst also containing the excitement, or nervousness, of your son or daughter!

We would like to share some tips to help you support your child in that important first half term:

## **Adapting to your child's new routines**

Encourage your child to have their school bag and uniform ready the night before. They will need help with this to begin with.

Moving up to secondary school doesn't make a young person independent overnight so plan in time each day to encourage your child to talk about their day.

It will be during this shared time that you can pick up on any issues, some of which you may need to raise with the school.

The importance of being equipped



for learning. Make the habit of being 'equipped for learning' stick, and ensure your child has the equipment they need in their bag every day. You will need to make these checks initially and should then slowly step back.

## **Taking an interest in homework**

"Are you doing your homework?". I expect you will come to find that you use this phrase far more often when your child has ten or more subjects on their timetable!

Take an interest in the content of the homework (and provide the space and resources) and don't allow homework to become a negative issue.

Trust teachers to track homework completion and inform you when, and if, it's not being done.

## **Mobile phones**

You should make yourself aware of the school policy and support the school with this. The distractions that

mobile phones bring do not support learning. Remember that school receptions are always staffed – this is the first point of contact.

## **Making the most of every opportunity to get into school**

The engagement of parents is vital in ensuring pupils, and schools, flourish.

When a child sees the school working with the parents it has a very positive impact on the child's progress.

## **Reading, reading, reading!**

At every opportunity encourage your child to read. This will be happening in school across all subjects. What part can you play in this?

Always remember – do not be afraid to reach out and speak to the school if there are any worries or questions, we all want the best for your children.

## FREQUENTLY ASKED QUESTIONS

■ Will my child automatically transfer from primary into secondary school

No, this is not the case. All applications have to be considered in line with the admissions criteria for the school they are applying to. There is normally no priority given to children attending primary schools associated with particular secondary schools.

■ What is the deadline for applications to be submitted?

Applications can be done by post or online. The closing date for secondary school applications is statutory and is October 31.

■ What happens if I submit my application after the deadline?

Unless there were special circumstances which stopped you from applying before the closing date, then your application will only be considered after those that were received before the deadline. If there were special circumstances, then supportive evidence must be provided at the time of your application.

■ What happens if I don't complete and return an application form?

Your child may not be allocated a school place until all those who did have been offered places. It is then possible that your preferred schools will be too full to admit your child

■ When will I find out which school my child has been allocated?

Offer letters, or emails, will be sent out to parents on March 1, 2026.



# APPLYING FOR A PLACE AT SCHOOL

**Applying to secondary school for the first time may seem a bit daunting, so it helps to fully understand the process.**

Letters will be sent out by councils detailing the steps you need to take. They always encourage parents to apply online, but paper applications will be available if you prefer.

Each council co-ordinates admissions for all maintained schools in its area and will make the offer of places.

Up to six choices can be stated on the admissions application, depending on where you live, in order of preference and they can include schools outside the area in which you live.

Places are not allocated on a first-come, first-served basis. All schools will consider applicants on an equal basis and parents are advised to put forward more than one choice.

Also, all applications will be considered against the admissions policy of the school concerned, regardless of which borough or county the child resides in.

The entrance criteria will depend on how the school is run – whether it's the council, governing body or a trust.

Faith schools are, as with other maintained schools, required to offer

a place to every child who applies, regardless of their faith, if there are places available.

But where the school is oversubscribed, these schools allocate places by reference to faith based on their admissions criteria.

If a child meets the criteria for two or more schools included on the application form, they will be allocated a place at the school that the parent ranked highest.

For community or state schools, first priority is given to children in public care, or those who have been adopted or become subject to a child arrangement order or special guardianship order.

Second priority will consider children with a 'serious ongoing medical condition' and third priority is given to children who have a sibling or half-sibling or step-brother/step-sister, living at the same address and who will still be attending the preferred school in September 2026.

Any places that remain available once the above applicants have been admitted, will be filled according to those children who live closest, determined by a straight-line measurement in metres, from the home address to the entrance of the school.

# ENSURING ALL SCHOOLS ARE MAKING THE GRADE

**Ofsted is a name that will already be familiar to most parents and it's one that you will continue to hear throughout your child's secondary school education.**

Understanding the reasons for the checks and their impact, will give you peace of mind that your child's school is doing everything it can to ensure pupils receive a high quality education.

All schools are required by law to be inspected, but how often it is visited will depend on how it has previously been judged. A full inspection normally takes two days. When they arrive the inspectors will look at the school's self-evaluation and analyse the pupils' progress and attainment. They talk to the headteacher, governors, staff and pupils and consider your views as a parent.

Inspectors spend most of their time observing lessons and looking at the quality of teaching in the school, and its impact on learning and progress. They also look at the personal development, behaviour and welfare of pupils, the promotion of spiritual, moral, social and cultural development; and how well the school is led and managed. Parents are given the option of providing their views.

After the visit, the lead inspector reports her or his judgement to the headteacher and governors.

The inspectors' findings are published in a report for the school, parents and wider community. This provides information about the effectiveness of the school's work and contains recommendations about what it should do to improve.

Ofsted has made changes to how school inspections are carried out to reduce pressures on teachers and school leaders. These include:

■ **Changes to how Ofsted inspects safeguarding** – At the moment, even when schools are rated mostly as Good, if the school is rated as Inadequate on safeguarding, the school will receive an Inadequate rating overall. This is due to the



importance of keeping children safe. But, in very rare cases where a school fails because of safeguarding issues alone, Ofsted will now follow up with a monitoring visit within three months to provide an opportunity for regrading.

If the school has been able to resolve the safeguarding concerns, it is likely to see its overall grade improve. Ofsted will also make safeguarding requirements as clear as possible for schools and parents.

■ **Clarity around confidentiality policies** – To reduce pressure on headteachers, Ofsted will make it clear that they are allowed to share the provisional outcomes of inspections privately with colleagues and get support from them before the report is finalised and shared with parents.

Ofsted reports will also talk about what the school needs to do, to reduce public focus on individuals, including headteachers.

■ **Support for schools between inspections** – Ofsted is giving schools more information about the timing of their next inspection. Schools will still get one day's notice, but they will have more clarity about the year they are likely to be inspected. This will be particularly helpful for schools that have been exempt from inspection

for many years. Outstanding schools are inspected less frequently than those with lower ratings. Outstanding schools that were last inspected before September 2015 are already receiving face-to-face seminars, to support them when the time comes for a new inspection.

## **Independent Schools Inspectorate**

The ISI reports on independent schools' compliance with the DfE Education (Independent Schools Standards) Regulations. It inspects schools that belong to the Independent Schools Council (ISC), which has more than 1,200 members.

But ISI and Ofsted use a different framework and criteria for judging school quality and they use different judgement words too. ISI uses excellent, good, sound and unsatisfactory and Ofsted uses outstanding, good, requires improvement and inadequate.

Another difference is that ISI inspection teams largely consist of practising senior leaders currently working in ISC schools. ISI inspectors judge ISI schools against the higher standards of academic achievement and extra-curricular activities in the sector as a whole as well as against national norms.



# WHICH SCHOOL IS RIGHT CHOICE FOR YOUR CHILD?

**These days there are many different types of school that differ in how they are run and funded as well as what subjects they teach.**

Gone are the days of it being a simple choice between a grammar school and a comprehensive. Now there are many types of schools, run and funded in different ways.

- State schools, which are also known as community schools, are managed and funded by the council. The local authority employs all of the staff, owns the land and buildings, and sets entrance criteria.

Pupils follow the National Curriculum and the council provides support services that may be required for students, such as psychological and special educational needs.

Students tend to be from a range of different backgrounds and have a mixture of abilities.

- Almost two thirds of the country's secondary schools are academies. They are run by a governing body and are independent from the local council,

with funding coming from central government.

Academies control their own admissions process and have more freedom in the classroom as they can opt out of the National Curriculum. They also have more power over pay, length of the school day and term times. But this freedom means there is usually no support, management or oversight from the local authority.

- Free schools are funded by central government, but can be set up by groups of parents, teachers, charities, businesses, universities, trusts and religious or voluntary groups.

They were introduced as a way to drive up standards through increased competition and hand power to parents and teachers to be able to create a new school if they were unhappy with the state ones in their area. They are exempt from teaching the National Curriculum.

To receive funding they must teach English, mathematics and science

and 'make provision for the teaching of religious education'. They are still subject to inspections by Ofsted. If you're involved with founding a free school, your children are guaranteed places. More than 300 free schools have opened since 2010, teaching more than 150,000 pupils across the country.

- Private schools, also known as independent schools, charge annual fees instead of being funded by the Government.

Many offer scholarships or bursaries based on assessment tests so it's worth looking into whether this is an option. They can be offered to academically bright children or youngsters with a special talent, such as music or art.

These schools are free to set their own curriculum, but must be registered with the Government and are inspected regularly. They tend to offer high-quality facilities and class sizes are likely to be smaller.

- A boarding school provides



education for pupils who live on the premises, as opposed to a day school. There are approximately 500 boarding schools across the UK. Children benefit from small classes and heightened interaction between students and their teachers as well as a broader range of extra-curricular activities.

■ Grammar schools have been around since the 16th century, but the modern model was created as a result of the Education Act 1944. It was all decided by an entrance exam – the 11-plus – which is still around today. Pupils who passed went to grammar school, those who didn't went to secondary modern. Today, there are still around 160 grammar schools across England.

A ban preventing new grammars from opening has been in place since 1998. These schools tend to have a strong focus on academic achievement and select pupils on the basis of ability through an entrance exam taken at the start of year 6.

■ Faith schools can be different kinds of schools, such as community, free schools or academies, but are associated with a particular religion. They have to follow the National Curriculum except for religious studies, where they are free to only teach about their own religion. Anyone can apply for a place.

■ At Foundation schools, the land and buildings are owned by a governing body, who are also responsible for running the school, employing staff and providing support services. Pupils have to follow the National Curriculum.

■ Voluntary-aided schools tend be mostly religious or faith schools. Just like foundation schools, the governing body employs staff and sets entrance criteria.

This means it has a substantial influence on how the school is run. School buildings and land are usually owned by a charity, often a church. They follow the National Curriculum but may teach religious education according to their own faith.

■ Voluntary-controlled schools are a cross between community and voluntary-aided schools. The council employs staff and sets entrance criteria. The difference is that school land and buildings are owned by a charity, often a church, which also appoints some members of the governing body. Voluntary-controlled schools are also required to follow the National Curriculum.

■ Co-operative trust schools, are becoming more popular. Although funded by the council, they are supported by a charitable foundation, which means they can set their own admission arrangements.

## PREPARING OUR CHILDREN FOR WORLD OF WORK

■ University Technical Colleges (UTCs) are government-funded schools with a STEM focus.

Through their association with employers and universities, through project-based learning, and through a focus on technical subjects, UTCs bridge the gap between the world of education and the world of work. Today, there are around 46 UTCs open across England, educating in the region of 17,500 students. They aim to prepare students for careers in industries such as engineering, healthcare, social care and science. They offer a secondary-age education for Key Stage 4 and Key Stage 5 with some starting at Key Stage 3.

■ Some schools, academies and colleges specialise in vocational subjects and offer bespoke curriculums to help students on the way to their chosen careers.

Some have a STEM or health focus, while others specialise in the likes of music, dance and performing arts and broadcast media. Students can choose a range of subjects that are relevant to their chosen future career and can take advantage of industry-standard facilities. These specialist schools, academies and colleges work in partnership with the industries so that students are able to apply their learning to the world of work.

■ There are also Studio Schools, which seek to address the growing gap between the skills and knowledge that young people require to succeed, and those that the traditional education system provides. They are usually small schools for around 300 students; and with year-round opening and a 9-5 working day, they feel more like a workplace than a school.

## CONSIDER THE SCHOOL POLICY ON A PUPIL'S SPECIAL NEEDS

All children have a right to be educated in mainstream school.

Some mainstream schools have special units attached to cater for children with particular types of need, such as autism or visual impairments. Such units offer children the opportunity to spend some time in a mainstream setting, but also to receive specialist teaching.

Your child will need an EHCP (an education, health and care plan) to be considered for a place in one of these special units.

There are also maintained special schools which are state-run and for children with more complex needs that cannot be met in mainstream. Your child will need an EHCP to be considered for a place.

Non-maintained special schools are run privately or by charities, some of which are residential. A small number of children with an EHCP may go to one of these schools, where it has been established that no local school can meet their needs. In the case of this type of school, the onus is on the parents to prove that no other school can meet their child's needs.

The British Dyslexia Association recommends checking the school's prospectus and asking for a copy of its Special Educational Needs Policy (SEN). It suggests that parents ask if there are special needs staff with qualifications in Specific Learning Difficulty (SpLD) and what training do all staff have. It recommends that you and your child meet the staff and find out what subjects the support will be available in.



# YOUR CHANCE TO ASK QUESTIONS

**Attending an open day is one of the best ways to let your son or daughter get a feel for a new school.**

Many will offer guided tours and there may also be the option to view a virtual tour on the school's website.

Open days are usually held in September and October, but most schools will allow parents and children to book an appointment to visit if they can't make a scheduled event.

During an open day, you'll be able to visit classrooms, and often pupils will show you around and talk to you about their school. Parents will probably be invited to hear a talk by the headteacher, the head of admissions or the head of the relevant section of the school.

Looking around will also enable you to discover more than you would if you just read the prospectus. It's an opportunity for you to speak to the staff, pupils and the headteacher. Feel free to ask questions if you want to, particularly of pupils – what do they think of the teaching? Do they enjoy life at the school?

Look at the work on display. Does it represent a broad range of ability? A school should value every child.

Does the school offer extra-curricular activities – such as sports

and clubs – so your child can develop their interests? This also shows that the teachers are motivated and enthusiastic.

Often current pupils will be drafted in to show prospective students around their classrooms and this will give a good insight into what life is like at the school. If they are enthusiastic and motivated, then this is a good sign that they are happy.

The events will also showcase what extra-curricular activities, such as sports and clubs, are on offer.

Remember to ask about transport – will your child have to make their own way there, or are there buses? Find out about the lunch arrangements – are there healthy school meals available?

Pay attention to the pupils themselves – do they seem happy and motivated? Do they speak positively about their teachers and school life?

It's also important to find out how the school seeks to work with parents. Ask how parents are kept informed on activities and achievements in school.

Make notes and watch your child's reactions and ask them what they thought.

Above all, listen to your gut instinct.

# GIVING CHILDREN A TASTE OF SECONDARY SCHOOL

**The transition from Year 6 to Year 7 can be a little daunting for many students and parents.**

When Year 6 children say goodbye to primary school, it marks the end of an era in their educational journey.

As it's such a big change for them, pupils are often given the opportunity to sample secondary school life before they begin Year 7.

Once you've accepted your child's school place next spring, the headteacher will often invite your son or daughter to one or more taster days, normally before the end of the current school year.

This day will give your child the chance to experience a normal day at the school as a way of breaking them in and relieving anxiety over the summer holidays.

They may also get the chance to meet other children from different primary schools so they can start getting to know their new classmates. They will also try out new lessons such as science, PE, dance, music or French.

It will also give them the opportunity to find out where their form room, canteen, lockers and toilets are located as it's likely they will not remember this from when they attended the open day.

They will also be able to try out the lunch system, which may be different from the one they are used to at primary school.

And if you're not certain if they are having school dinners or taking a packed lunch, sampling the food will enable them to help you make a decision.

The whole idea of a taster day is to make their first day easier, as they will already have a rough idea of the layout of the school, and make the transition from primary school to secondary school as smooth as possible.

It also gives children the opportunity to meet plenty of new faces including the headteacher, the head of year, their form tutor, subject



teachers and other school staff.

They will also meet other children who are about to start Year 7, and possibly others who are already at the school such as buddies or mentors from higher years.

During the summer holidays, your child's new school may give them tasks to complete before the new term begins.

Some also provide activity ideas such as recipes to try that will be similar to what pupils will be learning in food technology or simple science experiments they can do at home to give them a taster of what their lessons will be like in Year 7.

Many parents also choose to set their children learning tasks to keep their brains ticking over during the break from school and avoid what has become known as the 'summer slide'.

This might be activities such as

taking part in the Reading Agency's Summer Reading Challenge, maths quizzes or fun games like Boggle that help to build language skills.

Some schools may also offer a summer school with sessions aimed at giving teachers the opportunity to learn about your child, what their strengths are and what support, if any, they might need.

Every school will operate differently so it's worth asking what they offer when you attend an open day or look for any information in their prospectus.

Most of the time, taster days help to ease children's nerves about starting secondary school.

However, if your child does have worries following their induction day, you can always phone their new school and ask for more information on the area that is concerning them or organise further visits.



# WHAT CAN YOU DO IF YOU MISS OUT ON A PLACE?

## **It's inevitable that not every student will get their first choice of secondary school.**

And while you will be keeping your fingers crossed that your child gets a spot, you should be prepared in case your wish doesn't come true.

Popular schools will be oversubscribed so it's important to remain realistic when waiting to hear if you've been successful. Also, it's vital to spend some time preparing yourself in case you want to appeal a council's decision.

It may well be that you are happy to accept a place at a school further down on your list if you believe it is still a good option for your child. But if you feel the decision made is not reasonable or the procedure has not been followed correctly then you are within your rights to appeal.

Your case will be heard by an independent appeals panel and the system allows you to argue that there are extra reasons why your child

deserves a place at your top choice.

For anyone considering appealing the decision, here is some more information on the process:

### ■ **What are the first steps?**

Parents are advised to accept the place you have been allocated regardless of whether you want it – this is a safety net to ensure you have a place for September if the appeal is unsuccessful. It can always be rejected at a later date if a space becomes available, or if the appeal is upheld.

Then you should contact your preferred school to be put on a waiting list should the school have one. This may happen automatically but it is always worth checking that it has been done.

This could remove the need for an appeal hearing if a place is freed up by other means, such as a change in circumstances for another pupil.

### ■ **How is an appeal lodged?**

Parents should lodge their intention to

appeal with either the local authority or, if it's a free school or academy, the governing body.

Details of who to contact, instructions for beginning the appeal process and the deadline will normally be provided with the place offer letter sent to you by the council.

If more than one school declines to admit your child, you are allowed to make separate appeals.

■ **What happens next?** If you think there are good reasons why your child should go to your preferred school, then you can present your case to an independent appeal panel.

Focus on positive reasons why your child needs to attend that school as opposed to the allocated one. Don't just state why your child should not go to the allocated school.

This might include the pupil's specific talents if the chosen school has specialist science or language facilities. It is recommended that parents take along evidence such



## IMPORTANT TO KEEP AN OPEN MIND OVER SCHOOL PLACE

It's easier said than done, but it's worth remembering to keep an open mind throughout the application process.

If it doesn't all go to plan and you miss out on your chosen school, then you will need to remain positive about the school your child has been allocated because that will make it easier for them.

Children pick up on your mood and if they know you're unhappy with their school it could affect how they settle in.

Concentrate on all of its positive attributes. If you are still feeling uncertain, contact the school to arrange a visit and speak to staff to allay any fears.

Touring the site for the first time or second, if you attended an open day, may help you see it in a new light.

Also, remember that your opinions and priorities may well change and the reasons why you ruled the school out may not matter so much in the future.

You may be worried about how you are going to manage with your child attending a school further away but then find it easier than you were expecting.

Maybe you are concerned about previous performance figures, but then see test and exam results start to improve.

It's also very likely that after your son or daughter starts you come to realise it was the best fit for them after all.

as school reports to back up the argument.

### ■ What happens at the hearing?

Appeals must be heard within 40 school days of the deadline for making an appeal. Either the school or council will give you at least 10 school days' notice of the hearing.

The panel is usually made up of three to five members of the public – both with and without experience of the education system.

Local authorities recommend that you provide evidence of why your child should attend your first choice and why it would be bad for them to go to another school.

The school will also present its case for why it cannot take extra children and why it would be bad for the school if they had to.

You will be able to pose questions to their representatives so think about what you may want to ask in advance.

Members will listen to both cases and ask questions. During the hearing, the panel will also check that the school's admission arrangements comply with the Schools Admissions Code. If the admissions criteria are legal and were properly followed, the panel must decide if they were followed fairly and thoroughly.

If they weren't properly followed

or are illegal, your appeal must be upheld. If your appeal has not already been upheld, the panel will decide if your reasons for your child to be admitted outweigh the school's reasons for not admitting another child.

The result is sent by post within seven days and the decision is legally binding – it can only be overturned by a court. If successful, your child will be allocated a place at their preferred school regardless of the class size.

■ **What happens if I lose the appeal?** If the appeal is unsuccessful you can still put your child's name on the waiting list in the hope of a place becoming available. There is plenty of time for circumstances to change by September as families may move out of the area meaning spaces can free up.

But understand that you can move both up and down a waiting list. If a family was to move into the area and be closer to the school, they could go above you.

If you're unhappy about the way the appeal process was carried out, you can complain to your Local Government Ombudsman. They can recommend a new appeal, but they can't review or overturn the appeal panel's decision.



# KITTING YOUR CHILD OUT FOR THE NEXT BIG STEP

**There is no getting around it. Kitting out children for their first year of secondary school can be expensive, but there are ways to keep the costs down.**

According to research conducted by The Children's Society, which surveyed 2,000 parents across the UK, on average they are spending £422 per year on uniforms and £287 for primary school children.

So how can you save money on school uniforms?

■ **Buy secondhand** – Sometimes there's a way to buy secondhand uniforms at the school through the Parent Teacher Association, Matthew Easter, chairman of The Schoolwear Association, says.

"Have a look on local Facebook sites or sometimes schools have secondhand sales themselves," advises teacher, mother and money saving expert Sophie Bradbury.

"Sometimes you can get uniform that's barely been worn as someone's grown out of it too quickly.

"If you know anyone with children in their older years, ask them. Chances are they've still got some old jumpers or polo shirts hanging around.

"Also check out your local charity shops and make sure to ask if they have any uniform out the back. Charity shops don't put everything out straight away, so it's always worth an ask.

"You can also try car boot sales. I'm always seeing old uniforms going for pennies."

It's great when siblings attend the same school too, because you can pass down their old items.

■ **Buy good quality uniform that lasts** – It's tempting to buy cheap school uniforms, but Easter suggests it's better to focus on quality over quantity.

"School uniforms are unique pieces of clothing, because pupils wear it for at least 196 days every year. It hardly changes too and doesn't get lost as much as parents think – it's only a small proportion. So why not invest in quality branded clothing that will last your child for a few years?

"It means you can focus on purchasing the quality staple branded items, including a blazer, jumper – depending on the school – and tie from recommended retailers and then get skirts, trousers, white shirts, shoes and anything else required from

independent retailers or supermarkets on the high street."

In reality, Matthew suggests parents end up spending more in a shorter space of time buying lower quality uniforms, because they might need to be replaced.

■ **Buy it big so you get more out of it** – Uniforms tend not to be a one-time cost: you'll have to buy replacements whenever your child has a growth spurt and the garments no longer fit.

An easy hack to minimising the amount of new uniforms you have to buy? Buy the items a bit too big, giving your child time to grow into it.

■ **Recycle or upcycle** – Clothing is one of the world's most polluting industries, so don't throw your old uniform away. Many schools, parents groups and local charities will run uniform swap shops but in many cases if you are in need of uniform, you can turn up without having anything to swap. If they are no longer good enough to wear again, you can always donate them to organisations that upcycle and recycle school uniforms.

An example is the Re:Form scheme (run by Trutex), which sells pre-owned uniforms at reduced prices.

# WHAT SUBJECTS WILL THEY BE STUDYING NEXT?

**If your child's school follows the National Curriculum then there will be compulsory subjects for them to be taught during the next five years.**

They will vary depending on their age – Key Stage 3 is for years 7 to 9 and Key Stage 4 for years 10 and 11 when most pupils work towards national qualifications, usually GCSEs.

The majority of the National Curriculum was introduced in September 2014, with English and maths coming into force for all year groups from September 2016. The exception is the science curriculum which came into force for all year 10 pupils in September 2016, and applied to year 11 pupils from September 2017.

All local-authority-maintained schools in England must teach these programmes of study. Although academies and private schools do not always have to follow this, there are still some subjects that are compulsory for all students to take.

If your child's new school is following the National Curriculum, then they will have lessons in set subjects including English, mathematics, science, history, geography, modern foreign languages, physical education, citizenship and computing.

In English classes, pupils will be taught to develop an appreciation and love of reading as well as to understand increasingly challenging texts. The programme also includes writing accurately, fluently, effectively and at length for pleasure and information as well as speaking confidently and effectively using various methods such as presentations and debates.

During Key Stage 3, the aim is for pupils to become fluent in the fundamentals of mathematics, including varied and frequent practice with increasingly complex problems over time.

They will also learn to reason mathematically by following a line of enquiry and solving problems by applying their mathematics to a variety of routine and non-routine situations.



History lessons may include the development of church, state and society in Medieval Britain 1066-1509, challenges for Britain, Europe and the wider world 1901 to the present day and the Holocaust.

While science teachers will work to ensure pupils develop their scientific knowledge and conceptual understanding in biology, chemistry and physics. They will also be taught nature, processes and methods of science through different types of enquiries that help them to answer questions about the world.

In geography sessions, they will work to extend their locational knowledge and deepen their spatial awareness of the world's countries using maps of the world.

Pupils will also be taught to understand geographical similarities, differences and links between places through the study of human and physical geography as well as geographical skills and fieldwork.

From Key Stage 3, schools are also required to provide lessons in religious education and sex education, but parents can sometimes choose whether children attend these classes.

Academies must teach a broad and balanced curriculum, which they can set themselves, but it must include English, mathematics and science. They must also teach religious education.

Schools will be able to provide more details on their specific curriculum if you are unsure.



# WORKING TOWARDS END GOAL – QUALIFICATIONS

**In a bid to ensure pupils leave school better prepared for work or further study, GCSE and A-level qualifications have been overhauled in recent years.**

Although there is still some time before your child will be ready to consider their options, it helps to understand what they are likely to face in the future.

For the first time in 2017, GCSE students didn't just receive their grades in subjects in the usual A\*-G format – in mathematics, English language and English literature they were graded on a scale between 9 and 1 instead.

These were followed by a further 20 subjects including history, geography, double science, PE and art and design with the remaining subjects getting the new grades after that.

A 9 is the top grade, while 1 is the

lowest pass possible, with an outright fail still graded as a U. The top grades of A\*\*, A\* and A are broadly equivalent to a new grades of 9, 8 and 7, while pass marks of B and C have been replaced by grades 4, 5 and 6. At the lower end of the scale, grades D, E, F and G will be graded 3, 2 and 1.

The Department for Education (DfE) says its GCSEs are designed to match the standards set by the strongest performing education systems in the world.

While exam regulator Ofqual said the 1 to 9 scale helps them to better differentiate between the highest performing pupils and distinguish clearly between the new and old exams.

Meanwhile, changes were also introduced to the A-level system. The reforms saw a switch to assessment being mainly by exam and have also led to some subjects such as

applied science and creative writing being scrapped. New style study programmes were introduced for some subjects in 2015 and since 2017 all courses have followed the same system.

Courses are no longer divided into modules and all exams take place in the summer. The changes also mean that students have less coursework and fewer practical assessments.

T Levels, which are equivalent to three A-levels, have been introduced in recent years.

The two-year courses were developed in collaboration with employers and businesses so that the content meets the needs of industry and prepares students for work, further training or study.

T Levels offer students a mixture of classroom learning and 'on-the-job' experience during an industry placement. Subjects include in



## CHOOSING THE RIGHT COURSE FOR YOUR IDEAL CAREER PATH

When it comes to A-levels and a degree beyond that, there are a wide range of subjects to choose from.

If your child wants to study certain subjects at university, or if they have a career area in mind, it's important to check if they have any particular A-level entry requirements. They may not yet know what they want to do after A-levels, so here's a quick guide to making choices. The most important criteria for choosing A-level subjects are:

- Are there any particular subjects and grades you may need? – If you have a particular career, job or further study in mind you may need to choose certain A-levels in order to meet entry requirements.

- Ability and enjoyment – Think about the subjects you are good at and like. If you enjoy what you're studying you are likely to be more motivated. If you have ability in your chosen subjects you can increase your chances of success.

- New subjects – Schools and colleges may offer A-levels in subjects that you have not studied before – it's really worth taking some time to find out what's involved in new subjects.

- Subject combinations – Some subjects cover common ground – such as geography and environmental studies. You need to check they're not too similar as some colleges and universities may not accept the combination for entry to higher level courses.

Some subject combinations fit well together – such as doing physics as well as mathematics or another science. This can help you meet entry requirements for higher level courses in future.

design, surveying and planning for construction; digital production, design and development; education and childcare; finance; hair, beauty and aesthetics; animal care and management; media, broadcast and production; and healthcare science.

Apprenticeships are also becoming an increasingly popular alternative to A-levels, with students looking to combine real work with academic study. It is also an opportunity for 16-year-olds to earn and learn at the same time as getting a foot in the door of their chosen industry.

Apprentices split their time between the workplace and a training centre or college. They are expected to work for at least 30 hours a week and are treated like a permanent employee, receiving a salary, holidays and other benefits.

Some programmes are structured so that an apprentice will spend four days in a week at work, and one day at college. Other employers will retain an apprentice for weeks or months at a time, and then send them to college for an extended study period

Anyone interested in an

intermediate, or level 2 apprenticeship will usually require at least five GCSE passes. But there are different entry requirements depending on the sector and job.

At any one time there are up to 28,000 apprenticeship vacancies available online in a variety of careers and industries across England – from accounting and animal care to plumbing and printing.

Other post-16 options, include Higher National Certificates (HNCs) and Higher National Diplomas (HNDs). They are a great way to prepare for a career in a specific industry and lead directly to the workplace. Both qualifications are provided by further and higher education colleges.

HNCs take about one year to complete full-time and two years part-time. It is equivalent to the first year of a degree.

HNDs take two years full-time and can also be taken part-time, which takes longer. This is the equivalent to two years of a degree. Both HNCs and HNDs can be very practical qualifications, so they do not just involve theory.

# MAKE THE MOST OF ALL THE EXTRA ACTIVITIES

**From playing in the band to being part of a sports team, there is more to school life than just what goes on in the classroom.**

In addition to their lessons, your son or daughter will have the chance to join in a whole host of extra-curricular activities.

Every school will offer a packed programme to ensure there is something to suit all interests. Maybe your child will already have a favourite sport or other interest they want to continue or they might choose to try something new.

Your child will no doubt have plenty of opportunities and it is something that should always be encouraged. Joining after-school clubs can make it easier for them to settle in to their new surroundings and make friends.

Children, especially those that are shy, may be concerned about how they are going to get to know their new classmates. They will be moving from a school where they knew everybody's name and now they could be in a class with children they have never seen before.

It is also a great chance for your child to develop an existing interest or start a new hobby, which could turn into a life-long passion.

All schools will offer sessions, with meetings taking place either before lessons, during lunch breaks and at the end of the day.

If your child doesn't have a particular interest already, encourage them to try something new. If it turns out it's not for them, they can always try something else. Make sure they don't just give up after the first attempt as it could take them a while to find a new interest and it may be that it's something they had never considered before.

Once your child has found an activity that they enjoy, succeeding in that activity could build their confidence and self-esteem.

As well as all kinds of sports, they could get involved in special-interest



clubs such as science or computing, music tuition and modern foreign languages, as well as homework clubs.

Popular extracurricular activities include book groups, creative writing and performing arts such as drama or choir groups.

Another benefit of extra-curricular activities is that they allow your children to make a contribution to their school or community, helping to prepare them for later in life. For example, if they play in a school band they may stage a concert that is open for the public to enjoy.

Activities can also teach them time management because children will be expected to get to sessions on time and be ready to start as soon as they arrive.

They also present opportunities for your child to set goals for themselves such as passing a music exam, or being picked for the lead role in a play. It will give them something to work towards.

Sports teams, clubs and activities, like dancing and music, all require children to work together towards a common goal. This will teach them the benefit of teamwork, which will be useful to them when they get their first job.

By joining an after-school club, they will also have the chance to mix with children of other age groups and outside their own circle of friends.

When you attend an open day, make sure to find out what there is on offer, especially if your child already has a particular interest.



# HELPING YOUR CHILD COPE WITH MORE HOMEWORK

**The amount of homework your child has to do will almost certainly increase significantly when they start Year 7.**

It's a daily part of secondary school life and your child will be expected to complete it all and meet any deadlines they are set.

Homework helps to build on what your child is learning at school so plays an important role in their education.

It's of course only natural that they may struggle to adjust to this increased workload at first. But there are plenty of ways you can help them to settle into this new routine.

Encourage them to be organised by helping them to get used to checking their timetables and packing their bags the night before.

It may help to draw up a list of items needed for each subject together so that they always have that to refer to. As well as books and equipment, make sure they know when they will need their sports kit, whether for lessons or after-school activities.

This will lead to less panicking and reduce the chances of anything being forgotten in the mornings – well, in theory anyway!

Children are usually given a planner to help them manage their homework. They'll be expected to use it every lesson to write down the details of their homework. You will probably be asked to sign their planner every week to confirm that they've completed their homework.

Take time to talk to your child about each day's homework assignments and make sure that they are keeping their planner up-to-date with what is required and when.

You may wish to provide them with wall space to hang a planner at home, such as a whiteboard, to also write their assignments on.

While you don't want to nag them, you don't want them falling behind either. Teach them to prioritise their work so that they are doing the tasks in the correct order according to the deadlines they have been set by their teachers.

Ensure that they have somewhere quiet to complete their work without any tempting distractions like the television or their tablet.

Encourage them to speak up if they are struggling, and if you have real concerns that they are finding it difficult to cope persuade them to speak to their form or subject tutor. If they are worried or unwilling, then you may want to do it yourself. If you think they are taking longer to complete an assignment than they should, then wait to see if it's just a one-off – it may be that it's one particular topic or task they've found more challenging. But if it becomes a regular occurrence you may wish to raise it with the school.

Schools will have different policies concerning what happens if homework isn't handed in, but it's usual for pupils to have to complete the work in detention. Reminding your child of this may be useful if they are showing signs of wanting to ignore an assignment, or put it off for another day. But once they get into a routine, they'll be fine.

## TOP TIPS FOR A HEALTHY PACKED LUNCH

The NHS's Better Health campaign has provided these top tips for healthy lunches.

- Freeze for variety – Keep a small selection of different types of bread in the freezer so you have a variety of options.
- Cut back on fat – Pick lower-fat fillings, like lean meats (including chicken or turkey), fish (such as tuna or salmon), lower-fat spread, reduced-fat cream cheese and reduced-fat hard cheese. And try to avoid using mayonnaise.
- Always add veg – Cherry tomatoes, or sticks of carrot, cucumber, celery and peppers all count towards their 5 A Day. Adding a small pot of reduced-fat hummus or other dips may help with getting kids to eat vegetables.
- Ever green – Always add salad to sandwiches and wraps too.
- Cheesy does it... Cheese can be high in fat and salt, so choose stronger-tasting ones – and use less of it – or try reduced-fat varieties.
- Cut down on crisps – Try reducing the number of times you include them in their lunchbox, and swap for homemade plain popcorn or plain rice cakes.
- Swap the fruit bars – Dried fruit like raisins, sultanas and dried apricots are not only cheaper than processed fruit bars and snacks but can be healthier too. Just remember to keep dried fruit to mealtimes as it can be bad for teeth.
- Switch the sweets – Swap cakes, chocolate, cereal bars and biscuits for malt loaf, fruited teacakes, fruit breads or fruit.



## FUELLING YOUR CHILD'S STUDIES

**Your child will need a good meal in the middle of the day to help them process all the new things that they are learning.**

And the choice is either they take in a packed lunch from home or they choose a hot dinner in the school canteen. Both have their pros and cons.

Sending your son and daughter to school every day with a full lunch box gives you control of the food they eat. But it's another job to do each morning when time is already precious and it can be hard to keep the options interesting for your child.

School dinners mean you know your child is getting a hot meal at lunchtime, but if you are leaving them to choose from the canteen menu you can't be sure they will select something nutritious.

For some of you the decision may be influenced by whether your child is entitled to free school meals. This is normally the case if you are in receipt of benefits such as Income Support, Child Tax Credit and Universal Credit. The local council can tell you if your child is able to get free school meals.

In recent years, schools have put a lot of effort into revamping their dinners, especially after celebrity chef Jamie Oliver highlighted the issue in

2005. He started his Feed Me Better campaign because he was appalled by the junk food being served at many schools in England. It led to new guidelines for school dinners and the Government investing £280 million on improving menus for youngsters.

Now all schools have healthy eating policies, which are reflected in the menus on offer for pupils. They also cater for different diets and allergies as well as for different religious faiths and beliefs.

Some have cashless systems where children use a card or even their fingerprint to buy their food each day after parents have paid money into their account. The benefits of this are that it means children do not have to carry cash on them each day. It also allows parents to monitor what their child is eating at school because they will know what has been purchased on their account.

Many parents still choose to send their children to school with a packed lunch, especially if they prefer to eat a hot meal together as a family in the evening. It also means they know exactly what their child is eating each day and they don't have to leave it up to them to make healthy choices. There are lots of ideas online if you're not sure what to give your child.



# WHY NOT TAKE AN ACTIVE ROLE IN LIFE OF SCHOOL?

**When your child starts Year 7, you may decide it's time to play a more active role in their school.**

Most schools will have a PTA, Parents Association or Friends of... group, which can be a great way of getting to know staff and other families while making a real contribution to the quality of school life for all.

Fundraising remains a major part of a PTA or similar organisation's activities and directly contributes to improvements from new books and computers to covering the cost of field trips.

But they can also help to improve the school's links with the wider community which can bring many benefits.

Parentkind, which is the largest network of PTA fundraisers in the UK, says: "PTA members also provide a willing workforce for the school when extra hands are needed, hold social events to bond the school community, run extra-curricular clubs for children and adults, and support parents through times of change."

There are said to be many benefits from joining a PTA – both for you and your son or daughter.

Firstly, becoming a member makes it easy to get to know people at the school, from the headteacher and teachers, to other parents.

Events run by the PTA, from a disco for pupils to the annual summer fete, are usually fun and are great for bringing the school together as a community. Teachers, parents and pupils alike get stuck in and enjoy themselves.

According to Parentkind, being part of the PTA helps parents to understand how things in their child's school work.

If the PTA is well supported by the teachers, you will realise how much they value the support it brings to the school.

There's a lot of evidence to suggest that when parents are engaged in a school, a child's attainment is improved because being involved in school shows that you think it's important.

Parentkind says that it's not uncommon for parents to feel unsure about getting involved with the PTA, there's an assumption that you will be expected to commit large chunks of time to the school, but that's not the case.

Any help you can provide is usually very much appreciated, and in return you will receive a huge sense of satisfaction and most likely a new group of friends.

There could be other ways for you to get involved in your child's school, so it's worth asking about any schemes they run.

Some schools recruit parent helpers to help children with reading or maths, share their skills and interests and provide careers advice.

They may also be involved in running after-school clubs or wider fundraising such as grant applications.

■ For more information about Parentkind, which provides specialist fundraising support and advice to parent volunteers and PTAs, go to [parentkind.org.uk](http://parentkind.org.uk)

# GET INTO GOOD HABITS FOR THE YEARS TO COME

**When your child starts secondary school, you will probably be wondering how to encourage them to take responsibility for revision and get into good habits for the years ahead.**

Starting revision can be more than a little daunting and, let's be honest, poring over piles of notes and textbooks is probably the last thing they will want to do.

But don't forget it's all for a good cause – their future – and there are many ways to help them make the task more manageable and less overwhelming.

- Allow plenty of time. The later they leave it to begin their revision, the more they are likely to panic as their end of year tests and exams draw near. They should speak to their teachers as they will be able to advise them on a suitable time to start hitting the books.

- Make sure they have somewhere at home where they feel comfortable to work and make sure it's quiet and uncluttered as this will help them to focus. But make sure they don't revise in front of the television or computer as these distractions are bound to prove too tempting.

- Draw up a schedule. They should set aside certain times for their revision and stick to them. It can help to plan to revise at a time when they know they work well – if they're not a morning person then they shouldn't schedule early sessions.

- Split revision into small chunks – they can't expect to concentrate for hours and take everything in. Set an alarm for 45 minutes and then encourage them to take a short break away from the books. Keep repeating to make sure they are taking frequent breaks during their revision session.

- Review and summarise notes. Pupils should pick out the key points and write them down again. One of the best ways to memorise information is by making notes over and over again.



- Organise a study group. If their friends are taking the same exams then they can arrange to get together to do some occasional group revision. They will be able to review notes and test each other. Talking to their mates, who understand what they're going through, will make them feel less stressed.

- Do plenty of past papers. This will help to familiarise them with the exam style and the type of wording used for the questions. If they get these checked by a teacher, they will learn how they are marked too.

- Keep testing them. Once they have completed a topic, they shouldn't just put it to one side. They must keep going back and reviewing it again as repetition will improve their memory.

- Eat well and drink lots of water. Keeping blood sugars level will help their concentration and motivation.

- Get plenty of sleep. Make sure

they are well-rested because being tired will not help them perform at their best.

- Allow time to exercise. Keeping active is important and will provide them with a break away from their revision. Even if they just go for a walk – the fresh air will clear their head.

- Find ways to relax. When they are planning their revision schedule, they should leave some time for their hobbies or seeing their friends because this will help them to switch off their brain for a bit and properly unwind.

- And finally, stay positive. If they go into exams expecting to fail and letting themselves get stressed, they are going to find the whole experience thoroughly miserable. They need to put it all into perspective, they can only do their best and as long as they do that everyone will be proud of them, no matter what happens.



# CHANCE TO GET A TASTE OF THE WORLD OF WORK

**One of the secondary school milestones your child can look forward to is their first work experience placement, usually in Year 10.**

This is a chance for your son or daughter to get out and explore the world of work and gain some invaluable insight which could inspire their future career choice.

Their teachers will no doubt explain more about the process when the time comes, but it doesn't hurt to have an early understanding of what they will be required to do.

And some early planning may also help to ensure they secure a placement in their preferred industry, especially if it's one that's going to be popular.

If you know where they want to work or what sector they would like to work in, then you can start making enquiries ahead of time.

For pupils who don't know what career they might like in the future, experts recommend they think about what they are passionate about as that should spark some ideas. If they like animals then they may want to look

into options that will enable them to work closer with them.

If they enjoy looking after younger siblings or babysitting, then childcare or teaching might be a good fit.

Nearer the time, pupils should speak to their teachers or careers advisor at school as they will be able to help with organising the placement and with speaking to the correct people, as well as dealing with the logistics.

Work experience is said to offer many benefits to teenagers such as boosting their confidence and inspiring their future career goals. Placements will also help them to develop skills such as communicating with others, working in a team and problem solving, which will be beneficial to their studies.

If your child wants to enter the world of work after leaving school, then work experience can also be a route to landing a job.

Impressing an employer during a work experience placement could mean they think of your child when they are looking to recruit in the future. Many companies will offer

opportunities to people who are known to them or they know already have an insight into the business.

If your child plans to go to university or start an apprenticeship, then having completed work experience in a sector related to their course or preferred place of work will show that they have enthusiasm for that industry and it also shows that they have made an effort to get a better understanding of what the job involves and what is required from them.

Competition for university places in areas such as medicine or veterinary practice can be tough, so having already secured work experience can help to make their UCAS application stand out.

Although it's usually a two-week work experience placement in Year 10, many companies will allow students to return during school holidays so they can build on their skills and learning.

For many employers, nothing is more impressive than a candidate with relevant work experience, and having this on their CV can put them a cut above the other applicants.

# LOOK OUT FOR SIGNS YOUR CHILD IS BEING BULLIED

**Knowing or suspecting that your child is being bullied can be very upsetting, but there's lots you can do to help tackle the problem.**

Although you hope it never happens to your son or daughter, there is a chance it might so it helps to be prepared to recognise the signs so you can help.

The good news is that most schools are very pro-active when it comes to preventing and dealing with this problem.

Bullying can take many shapes and forms and sadly technology and social media have also made it easier for those who want to cause trouble for others.

■ **Cyber bullying** – usually carried out online, via smartphones and tablets – is becoming increasingly common and can cause the same emotional and physiological stress as the conventional kind.

However, one of the biggest challenges posed is that it can be harder to detect because it only takes place via phones and other electronic devices.

The charity Family Lives recommends parents make note of everything that happened, including who was involved, when it occurred and who witnessed it, before approaching the school.

Cyber bullying, unfortunately, can be harder to spot, and with mobile technology being so freely available it can seem never-ending as the taunting can continue at any time of the day or night. It can also be made worse if taunts are made via social networking sites and messaging apps because anything posted can often be seen by lots of people and easily shared.

■ **Make an appointment with the class teacher or head of year** – they will want to see you if you have concerns. All state schools are required to have an anti-bullying policy by law. Work together with the school and make it clear you are seeking their



help in finding a solution.

■ **Avoid accusing the school** – remember that teachers are usually the last to find out that bullying is happening.

■ **As difficult as it may be, try to be patient** – allow the school time to deal with the problem but stay in touch with them and arrange a follow-up meeting to see how the situation is being resolved. If things don't improve, keep a bullying diary and write down every incident as soon as possible after it happens making sure to tell the school each time.

■ **Look for changes in your child's behaviour** – they may be less talkative and appear secretive. They may suddenly be unwilling to go out with friends or stop doing an activity they have always enjoyed.

Once they have confirmed your suspicions – keep a log of what's happened, get screen grabs of texts or messages on social media and then go to the school for help.

**What to do if your child has bullied someone:** No parent wants

to find out that their child is bullying another pupil and it's likely that you will feel angry, disappointed or any number of other strong emotions.

The NSPCC recommends that you should explain that what they're doing is unacceptable.

Children and young people don't always realise what they're doing is bullying, or understand how much their actions have hurt someone.

Childline has lots of great advice specially designed for children and young people.

The NSPCC says that it's important to help them realise how what they've done will have affected the other person. You could ask them how they think the other child is feeling, and to remember how they've felt when someone has said or done something unkind to them.

Explain what you're going to do next, such as telling their school, and what you expect your child to do now. Ask them whether they have any questions about why their actions need to change.



# MAKING SURE YOUR CHILD IS STAYING SAFE ONLINE

**Once your child starts secondary school it's likely that they will become more exposed to smartphones and social media.**

And they are never too young to start developing good online habits.

One of the best ways to start is to encourage your child to talk to you about how they use the internet and show you what they do.

A good time to do this might be if they mention a new website or are starting a major project at school.

Setting a few ground rules can also be a way to ensure they are surfing safely. This might include asking them to use their tech devices in a communal area such as the living room or kitchen.

Another important step is to activate all of the parental controls on your home broadband and all devices including mobile phones and games consoles. Safe searching features can also be set up on websites such as Google to help them avoid any adult

content. Your home Wi-Fi network and TV settings should be password protected.

Think about setting up accounts for your children so they're only seeing age-appropriate content. For example, on TV streaming services like Netflix.

As they get older your child may want to have a social networking profile on sites such as Facebook and Instagram. The age limit is 13 for these sites and many games, apps, films and other social networks will have age ratings.

When they are old enough, talk to them about the benefits and risks before they join and ensure they understand that anything they upload, email or message is out of their control as soon as they press the button.

Remind them they should only do things online that they wouldn't mind you, a teacher or a future employer seeing.

It's also important that they know how to block or ignore people and how

to set strict privacy settings.

Children often feel they can say things online that they wouldn't say face-to-face, so it's important to teach them to always have respect for themselves and others online.

They also need to know there is nothing wrong in NOT giving in to peer pressure to send inappropriate comments or images.

Technology can move at an extraordinarily fast pace so it's always a good idea to check in with your child from time to time, to make sure that they are using the internet appropriately and you are confident they are staying safe.

The NSPCC says: "Talking regularly with your child is the greatest tool to help keep them safe online. Talking regularly and making it part of daily conversation, like you would about their day at school, will help your child feel relaxed. It also means when they do have any worries, they're more likely to speak to you."

# HELP TO MEET THE COSTS OF A PRIVATE EDUCATION



## Many parents will rule out fee-paying schools for their children because of the costs involved.

But most independent schools, often known as private schools, will offer financial assistance in the form of scholarships or bursaries for pupils.

Fee-paying schools tend to have smaller class sizes, excellent exam results and a good record of entry to top universities.

Many devote a significant amount of time to cultural activities, like art, drama and music, and most will also offer a wide variety of sporting opportunities.

They may also have more teachers per 100 pupils, pastoral care and more provision for special needs.

Scholarship and bursary applicants will usually need to prove that they are very able and demonstrate the need for monetary support. It is estimated that almost a third of pupils educated in the private sector receives some form of financial assistance in the form of a scholarship or bursary.

Not only do schools want to attract

the most talented students, but many are also realising that having a broad social mix which reflects our society is incredibly important. This is why many have funding available for pupils whose families are on lower incomes.

According to the Independent Schools Council, the total value of means-tested bursaries and scholarships provided by schools has increased by over £195m since 2011, and currently stands at around £455m per year.

Scholarships are not usually means-tested, but are instead based on the child's abilities in a particular area. They are usually available to pupils who are very strong either academically or in music, sport or art.

Some scholarships offer other benefits such as extra coaching or tuition, additional trips, tours and mentoring for the duration of the pupil's time at school.

Bursaries are means-assessed on a financial basis and will require a parent or guardian to complete a declaration to establish whether the

student meets the necessary criteria. This is usually re-assessed each year that the bursary is required. The school looks at what it is reasonable for you to afford and sets a fee accordingly.

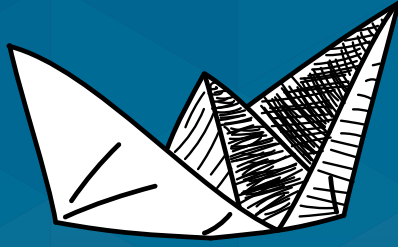
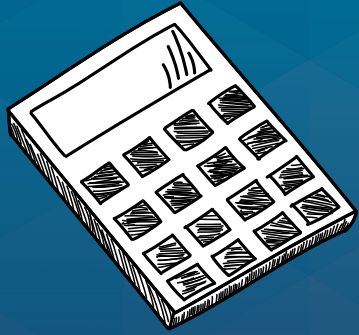
Some schools are able to offer greater bursary provision than others and they can cover up to 100 per cent of fees.

They can also help with costs which are not included in the normal school fee, such as uniform and school trips.

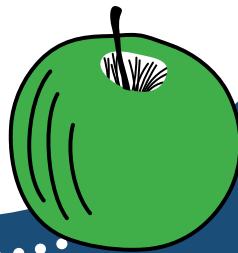
There are also charitable grant-making trusts who can help offer financial support to those who need it most. They include The Royal National Children's SpringBoard Foundation which provides bursaries to help disadvantaged children attend state or independent boarding schools.

Both scholarships and bursaries can be awarded to children at the same time.

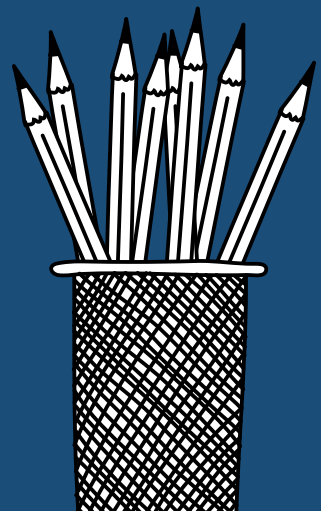
■ For more information about the different types of support available, visit [www.isc.co.uk](http://www.isc.co.uk)



**Independent  
and State Boarding  
Schools**



$$a^2 + b^2 = c^2$$



# Wolverhampton Grammar School

**DISCOVER HOW WOLVERHAMPTON GRAMMAR SCHOOL PREPARES PUPILS FOR A BRIGHT FUTURE AT THEIR OPEN DAY.**

On Saturday 4th October, Wolverhampton Grammar School (WGS) invites families from across the region to experience its inspirational and exciting learning environment during its annual Open Day.

This event is an excellent opportunity for families to explore our school and learn more about what we can offer students aged 4-18.

We understand that choosing the right education for your child is not easy, and attending an Open Day allows you to gain a comprehensive understanding of what your child's next steps would look like.

Renowned for its academic excellence and inclusive community, WGS provides an enriching education from Reception through to Sixth Form, ensuring every child has the opportunity to succeed in all aspects of school life.

Our commitment to fostering a nurturing and supportive environment is reflected in the achievements and personal growth of our students.

As one of the region's leading independent schools, WGS was founded in 1512, making it one of the oldest independent schools in the country.

The school consistently achieves outstanding exam results and contributes significantly to the local community. Additionally, our small class sizes ensure personalised attention, enabling every child to reach their full potential.



We also offer an extensive range of extracurricular activities, with over 100 clubs available to enrich the educational experience of your child.

During your visit, you will be welcomed by the Head, Nic Anderson, and have the opportunity to meet current students and teachers.

Student-led tours will enable you to enjoy our 25-acre site, including the impressive sports grounds, arts centre, and purpose-built music block.

There will also be a range of fun and engaging activities for you and your family to take part in as you make your way around our school.

Head, Nic Anderson, says: "WGS offers an education that transforms lives as well as minds.

"Our unique approach to learning allows your child to develop skills in resilience, independence, and confidence.

"They will form friendships and new interests and become more curious about the world around them."

Don't miss this opportunity to visit Wolverhampton Grammar School and learn more about the entry process.

Please register for the Open Day at [wgs.org.uk/whole-school-open-day](https://wgs.org.uk/whole-school-open-day) to secure a place.

This event is not only an insight into the academic offerings but also a glimpse into the dynamic and inclusive culture that WGS prides itself on, preparing students for a successful and fulfilling future.





WOLVERHAMPTON  
GRAMMAR SCHOOL

# WHOLE SCHOOL OPEN DAY

Saturday 4<sup>th</sup> October 2025  
9.30am & 11.30am



Tour our state-of-the art facilities,  
meet teachers and current pupils



Take part in exciting activities  
across our science lab, library,  
sports hall and much more



Suitable for students  
from Reception to Sixth Form



SCAN  
HERE  
TO  
ATTEND



Wolverhampton Grammar School  
Compton Road, Wolverhampton, WV3 9RB  
Registered charity (England and Wales no. 1125268)

01902 422939  
admissions@wgs-sch.net

# Old Swinford Hospital

**A HAPPY, VIBRANT AND DISTINCTIVE STATE BOARDING SCHOOL WHERE TRADITION, COMMUNITY AND VALUES SIT COMFORTABLY ALONGSIDE INNOVATION, OFFERING TAILORED BOARDING, FLEXI BOARDING AND DAY PLACES FOR STUDENTS AGED 11-18.**

**Awarded 'Outstanding for boarding' by Ofsted, Old Swinford Hospital provides a unique educational experience where learning doesn't end at the afternoon school bell.**

As a state school, OSH offers boarding school education at a fraction of the independent sector fee; and fees are not subject to VAT.

September 2025 is history-making as the school becomes fully co-educational. Girls boarding will begin its fifth year, and they have certainly made their mark. OSH girls have quickly become sportswomen, singers, potters and cadets, designers and dramatists, and are fully immersed in boarding school life.

OSH is a community of many parts where every student is encouraged to be themselves, and to make their own contribution. We welcome an eclectic mix of aspirational young people from all over the UK and overseas. Diversity of life is embraced, and learning to live – not simply work – alongside one another is a life skill that cannot be underestimated.

**'Pupils live together, learn together and thrive at Old Swinford Hospital' – Ofsted**

Preparing students for the future underpins everything we do. Staff understand and respond to the individual and collective needs of students, and help each find and develop his or her own voice. Through our broad academic curriculum and extensive co-curricular opportunities, OSH encourages students to 'discover who they can be'.



Modern sports facilities accompany an ambitious programme so that many teams hold regional or national titles. Our 1st XV rugby team are John Fisher State School Festival champions, and we are featured in The Cricketer Schools Guide as a top performing school for cricket. We have recently opened a new state-of-the-art gym and our Athlete Development Programme launches in September.

With more than 45 co-curricular clubs and ten music ensembles; excellent STEM facilities and new design and technology spaces; kitchen classroom and two climbing walls; and new art, drama and dance studios, there's plenty to get involved with. **There's opportunity at OSH with Tailored Boarding**

Boarding is at the heart of the community. The impact on the young people at OSH is threefold:

Boarders develop great resilience, independence and genuine confidence; they show humility alongside aspiration; and they grow lifelong friendships.

Designed with busy families in mind, Tailored Boarding allows the flexibility to fit school and your son or daughter's extra-curricular activities around your working patterns and family lifestyle in a safe, shared community where your child will grow in independence and confidence.

Tailored Boarding allows boarders to stay over whenever they like. You and your child have the opportunity to choose when and how often you access boarding facilities and associated co-curricular activities. You have the freedom to decide whether your child stays over, or comes and goes before and after the school day to fit with their busy club and social schedules both in and out of school, integrated with your home life. Plus, all meals are included in the fees and our expert boarding teams will ensure that homework is done.

We invite you to see for yourselves what a distinctive community OSH is. Come to our Open Morning on Saturday 13 September, we look forward to welcoming you. For further information contact [admissions@oshsch.com](mailto:admissions@oshsch.com) or 01384 817325.





# OSHS

OLD SWINFORD HOSPITAL

Open Morning

SATURDAY 13 SEPTEMBER

9:30AM-12PM

discover

who you can be



BOOK NOW

[oshsch.com](http://oshsch.com)

# Hydesville Tower School

## HYDESVILLE TOWER SCHOOL: THE RIGHT START TO SECONDARY SCHOOL

As children approach the important transition into Year 7, choosing the right school can feel like a daunting decision for families.

Hydesville Tower School offers a smooth, supportive start to secondary education – one that inspires confidence, nurtures ambition, and empowers pupils to achieve their full potential.

Recognised as Walsall's top-performing non-selective secondary school by the Department for Education, Hydesville achieves exceptional results through care, not selection. The school is committed to knowing every child as an individual, enabling them to thrive through small class sizes, personalised teaching, and outstanding pastoral care.

Headteacher Mrs Samra explains:



“In Year 7, children need to feel safe, seen, and supported. At Hydesville, we create an environment where they are known as individuals, challenged academically, and empowered to believe in themselves.”

Year 7 pupils at Hydesville benefit from a dedicated induction

programme, personal mentors, and a rich, engaging curriculum designed to build confidence from the very beginning. Aspirational goals are set for every child, supported by a structure that encourages both academic achievement and personal growth.

Hydesville Tower School equips pupils with the mindset, skills, and resilience needed for long-term success.

Mrs Samra adds: “Hydesville is more than just a school, we are a close-knit community where every child is inspired to discover who they are and what they can achieve.”

Families are warmly invited to experience Hydesville at its Open Morning on Saturday, October 4th.

Register now or find out more at [www.hydesville.com](http://www.hydesville.com).



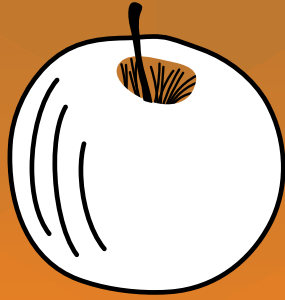
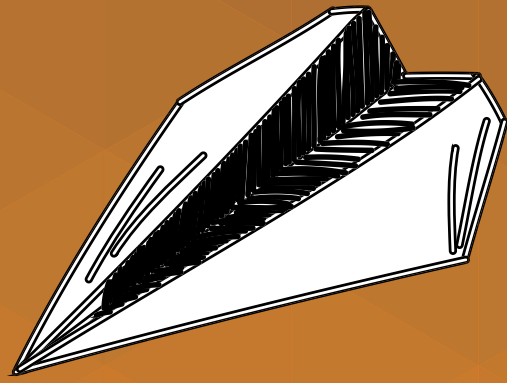
HYDESVILLE  
TOWER SCHOOL

A leading independent school in Walsall for boys and girls aged 2 to 16.

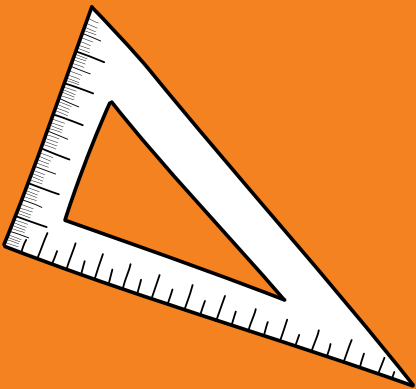
Inspire, Achieve, Empower

Find out more at our Open Morning  
Saturday 4th October, 10am to 12noon

➤ [admissions@hydesville.com](mailto:admissions@hydesville.com)



# Wolverhampton



$$a^2 + b^2 = c^2$$

# City of Wolverhampton Council

## TIME TO APPLY FOR YEAR 7 PLACES AT WOLVERHAMPTON SECONDARY SCHOOLS!

### Families across Wolverhampton face a key milestone: the move from primary to secondary school.

Applications for Year 7 places in September 2026 open on September 10. Parents and carers are encouraged to explore local secondary schools and make informed decisions about their child's next academic step.

The move to secondary school is a significant milestone and one that brings both excitement and uncertainty. To help ease this transition, schools across Wolverhampton are opening their doors to prospective pupils and their families. These open days offer a valuable opportunity to tour facilities, meet staff and students, and gain a deeper understanding of each school's ethos and environment.

A full list of secondary schools,



along with open day schedules and contact details, is available at [wolverhampton.gov.uk/school-open-days](http://wolverhampton.gov.uk/school-open-days). Parents are strongly advised to attend these events and to carefully review each school's admissions criteria before submitting applications.

Importantly, families are reminded to use all five preferences on their application forms to maximise their chances of securing a place at a preferred school. The national deadline for applications is October 31.

Councillor Jacqui Coogan, Cabinet Member for Children, Young People and Education, said: "If your child is about to enter their final year of primary or junior school, now is the time to start planning for their secondary education. This is one of the most important decisions you'll make for your child's future, so please don't miss the deadline. Applying on time can significantly improve your chances of securing a place at a school that's right for your child."

As Wolverhampton's schools prepare to welcome the next generation of learners, families are encouraged to take full advantage of the resources and opportunities available, ensuring a smooth and confident start to secondary school life. To apply, log on to [wolverhampton.gov.uk/make-your-application](http://wolverhampton.gov.uk/make-your-application) and complete the application process.

# SCHOOL OPEN DAYS

**City of Wolverhampton secondary schools** will be holding open events for parents and carers of children born between **1 September 2014** and **31 August 2015**.

For full details, please visit [wolverhampton.gov.uk /school-open-days](http://wolverhampton.gov.uk/school-open-days)

# Highfields School

**HIGHFIELDS: WHERE EVERY CHILD MATTERS AND EVERY CHILD ACHIEVES**

**At Highfields we believe that every child really matters. We are more than just a school; we are a community where every child's potential is nurtured and realised.**

We are committed to creating a happy and harmonious learning environment where every child can thrive; enjoy academic success and become well-rounded individuals who can contribute positively to our community and beyond.

We understand that each child is unique and our well-designed curriculum, combined with high-quality teaching and learning, enables all students to develop a passion for learning. From the arts and sports to science and technology, our wide range of extracurricular activities ensures that students can explore their interests and develop their talents. We firmly believe that our



holistic approach to learning fosters students' creativity, confidence and resilience. We pride ourselves on providing exceptional support and challenge for students of all abilities, strengths and talents. Together with our dedicated and award-winning safeguarding and inclusion teams, we ensure a safe and caring community where every child can flourish. We emphasise the values of honesty and integrity, creating an environment

where students feel valued and respected.

The transition to a new school can be an exciting yet sometimes daunting experience for students. Our Lower School pastoral team will ensure that each student feels welcomed and supported from day one at Highfields. Your child's Year Manager will move through the school with them, providing both you and your child with ongoing and unparalleled support during their time with us.

We invite you to visit our vibrant learning community on our Open Morning on Saturday 21st September, where you can meet our dedicated staff, tour our exceptional and modern school and see our commitment to every child in action.

Come and see how we can make a difference to your child's education and to their future.

**HIGHFIELDS SCHOOL**

# Open Morning

Saturday 20th September  
10:00 am - 12:30 pm

 [www.hswv.co.uk](http://www.hswv.co.uk)  
 01902 556530  
 [enquiries@hswv.co.uk](mailto:enquiries@hswv.co.uk)

PART OF THE  
**LYKOS**  
COMMUNITY

# St Peter's Collegiate Academy

**SHAPING TOMORROW'S LEADERS: A WELCOMING, AMBITIOUS AND INCLUSIVE CHURCH OF ENGLAND ACADEMY IN THE HEART OF WOLVERHAMPTON**

Founded in 1847, St Peter's Collegiate Academy is a co-educational Church of England academy and sixth form (part of Three Spires Sixth Form) serving students aged 11–18.

With a strong heritage and a future-focused curriculum, we are proud to be a diverse and inclusive school community, welcoming families of all faiths and none.

Our core values – Respect | Service | Aspiration – are at the heart of everything we do, empowering students to flourish academically, socially and spiritually.

## **Recognised for Excellence and Inclusion**

St Peter's has recently been rated 'Good' in all areas by Ofsted, who praised our inclusive ethos, calm learning environment, high-quality teaching, and broad personal development offer. In the same year, our SIAMs inspection affirmed the strength of our Christian vision, describing inclusion as a key strength and highlighting the way our curriculum and enrichment programmes meet the needs of our diverse student body.

"This is an inclusive school where pupils of all backgrounds are valued and welcome." – Ofsted, 2025

## **A Transformational New Building**

Although St Peter's is much more than its physical facilities, the move into a state-of-the-art new building in



January 2026 marks a pivotal moment in our journey.

With 80% of the site being rebuilt through a £40 million investment, the new facilities will transform our students' learning experiences. This exciting development will provide future-proofed, high-quality learning spaces that support innovation, creativity and collaboration, ensuring the best possible education for students joining us in September 2026 and beyond.

## **A Culture of Enrichment and Opportunity**

Enrichment is a cornerstone of life at St Peter's. From elite sports pathways in basketball, rugby and cricket, to subsidised instrumental

lessons, choirs, drama productions, DofE, and STEM clubs, our students are encouraged to explore their passions and talents beyond the classroom.

We believe strongly in broadening horizons. Last academic year, 99% of our students attended at least one off-site visit, whether for curriculum enrichment, university taster days, or outdoor learning.

Trips abroad to Paris and Venice, ski trips to Italy, numerous after-school clubs and activities, and opportunities to join groups and societies all contribute to students flourishing as well-rounded, culturally-enriched and work-ready individuals.

"There's something here for every student to discover their passion, whatever their background or interests" – St Peter's Student Voice

## **Visit Us**

We're delighted to welcome families to our Open Evening on Thursday 25 September 2025, from 5.00 pm to 7.30 pm. Come and experience the warmth of our community, explore our forward-thinking curriculum, and hear about the exciting future ahead for St Peter's.

Find out more at [www.stpetersacademy.org.uk](http://www.stpetersacademy.org.uk)



"PUPILS OF ALL BACKGROUNDS ARE VALUED  
AND WELCOME."

OFSTED - 2025



**St Peter's**  
Collegiate Academy

# OPEN EVENTS

25 SEPTEMBER | 1, 2, 20 & 21 OCTOBER

Register **today** to discover what makes St Peter's the **right choice** for your child's secondary education.

[www.stpetersacademy.org.uk](http://www.stpetersacademy.org.uk)



Respect | Service | Aspiration



Compton Park, WV3 9DU

# Thomas Telford UTC

**THOMAS TELFORD UTC PROVIDES THE YOUNG PEOPLE OF WOLVERHAMPTON AND THE SURROUNDING AREA WITH A UNIQUE COMBINATION OF EXCELLENT ACADEMIC ACHIEVEMENT AND FIRST CLASS PREPARATION FOR THEIR FUTURE.**

**The future is looking bright with a new school from the Thomas Telford Multi Academy Trust.**

Following a new collaboration with Thomas Telford School we opened our doors to our first cohort of Year 7 students in September 2020. Students have excelled at the UTC and we believe the strength of both schools unites us to offer students a truly ground-breaking opportunity and has resulted in the UTC achieving some of the best examination outcomes in the city.

Equally, Ofsted has praised Thomas Telford UTC noting that: "An overwhelming sense of community and mutual respect greets you as you arrive at this school.

Relationships between pupils and staff are supportive, caring and focused on pupils achieving their potential.

"The school prioritises pupils' personal development exceptionally well. They receive an extensive range of employment, cultural and leadership experiences.

This includes mentoring and employment placements across all year groups. In addition, many pupils regularly take part in a range of clubs, such as myth mania and film club. These opportunities enhance their wider experiences effectively."



Thomas Telford UTC prides itself on offering a:

- Broad and balanced curriculum
- Placing a strong emphasis on STEAM subjects (Science, Technology, Engineering, Art & Maths)
- Superb learning environment with state-of-the-art facilities
- Excellent enrichment opportunities
- First-class employer engagement
- Unrivalled academic and technical education
- Extensive support from the University of Wolverhampton and The Thomas Telford Multi Academy Trust

The Principal Av Gill said: "I am honoured to be entrusted with leading Thomas Telford UTC on a journey that I am confident will see this flagship establishment become the gold standard for secondary education in Wolverhampton.

"I want every child that comes to Thomas Telford UTC to be part of the fabric of the school, and to come home every day fulfilled and happy that they have made progress in their

learning and development.

"In collaboration with our sponsors and industry-leading employer partners, we are able to offer unrivalled opportunities for 11-18 year-olds in the region that will allow them to go beyond their expectations.

"Our partners at Thomas Telford School and the University of Wolverhampton believe that all students deserve the chance to flourish in an exceptional environment that offers access to cutting-edge technology and unique, hands-on experiences.

"Together, we will provide our students with the perfect combination of academic and technical excellence in preparation for the world of work and the fantastic opportunities that await them."

**Key dates:** Parent Information Evenings will take place on September 11, 17 and 30. Book via the website [thomastelfordutc.com](http://thomastelfordutc.com)

The closing date for applications is October 31.





# Thomas Telford UTC

Offering a unique combination of excellent academic achievement and first-class preparation on for your child's future



## PARENT INFORMATION EVENINGS FOR YEAR 7 ADMISSIONS 2026

**11th, 17th and 30th September 2025**

**Book via the website**

**Closing dates for applications - 31st October 2025**

**Admission testing - 22nd & 23rd November 2025**

**Allocation of places - 2nd March 2026**

**For more information contact us: Tel: 01902 872180**

**Email: [admissions@thomastelfordutc.com](mailto:admissions@thomastelfordutc.com) • [www.thomastelfordutc.com](http://www.thomastelfordutc.com)**

**Springfield Campus, Cambridge Street, Wolverhampton WV10 0JR**

# Smestow Academy

**SINCE JOINING MATRIX ACADEMY TRUST IN JANUARY 2023, SMESTOW ACADEMY HAS UNDERGONE A TRANSFORMATION THAT IS NOTHING SHORT OF REMARKABLE**

**United by our motto, Success Achieved Together, we have focused on building strong foundations – both academically and culturally – that are enabling our students to thrive.**

We are a small school that knows and cares deeply about every pupil. This close-knit community allows us to nurture individual strengths, provide tailored support, and ensure no child is ever overlooked.

Over the past two years, we've seen attendance rise by more than 5% – a powerful sign of a happier, more engaged school environment.

In 2024, we became one of the most improved schools in the country for pupil progress at GCSE, as our Progress 8 measure soared from -0.34



(2023) to +0.31 (2024), a testament to the high expectations and care that underpin everything we do.

Central to our success are seven simple, clear expectations that every pupil is taught to understand and meet. In lessons, our three learning modes – silent independent study,

respectfully listening, and polite partnership – ensure calm, purposeful classrooms where disruption is minimised and learning thrives.

Our approach is guided by a simple belief: what we want for our pupils is what we'd want for our own families. That means a safe, supportive environment with strong routines, ambitious teaching, and a relentless focus on progress and wellbeing.

We warmly invite prospective parents and pupils to attend our open evening or open mornings in early October.

Come and see our values in action – witness the pride, focus and potential that define our community. See for yourself how Success is Achieved Together at every level.



Smestow Academy

## OPEN EVENING

Wednesday 1<sup>st</sup> October 2025

4pm - 7pm

## OPEN MORNINGS

Thursday 2<sup>nd</sup> October 2025

Friday 3<sup>rd</sup> October 2025

Tuesday 7<sup>th</sup> October 2025

Wednesday 8<sup>th</sup> October 2025

9am - 10am

ONE OF THE MOST IMPROVED SCHOOLS IN THE COUNTRY  
(FOR PUPIL PROGRESS 2024)

[www.smestowacademy.co.uk](http://www.smestowacademy.co.uk)  
01902 539500



Windmill Crescent  
Castlecroft, Wolverhampton  
WV3 8HU

# Our Lady & St Chad Catholic Academy

**“TOGETHER, WE WILL EMULATE THE LOVE OF CHRIST AND BECOME THE PEOPLE GOD CREATED US TO BE.”**

**At Our Lady and St Chad Catholic Academy, we are a Christ-centred community where every child is known, nurtured and inspired to fulfil their God-given potential.**

Rooted in Gospel values, our mission is to form compassionate, curious and aspirational young people who live with integrity and lead with purpose.

We are proud to offer an inclusive and welcoming environment where students from all backgrounds and faiths are celebrated. Every young person is valued for who they are and encouraged to flourish in a culture that places faith, character and learning at its heart.

Our academy promotes the highest standards in all aspects of school life. Staff lead by example, fostering a positive ethos built on the Gospel



values of respect, truth, justice, peace, charity and forgiveness. These values underpin our expectations.

Our students grow to become confident, resilient and responsible individuals who value learning and strive for excellence. Teachers challenge and support them in equal measure, developing their talents and preparing them for a future filled with hope and opportunity.

Pastoral care is a hallmark of

our community. Strong relationships between staff and students create a safe, supportive and family-like atmosphere where every individual can thrive.

At Our Lady and St Chad, we offer a rich and broad Catholic education for students aged 11–18, grounded in tradition and committed to developing the whole person. We believe that we are strong alone, but unstoppable together – a philosophy that runs through everything we do.

If you are seeking a secondary school where your child will be known, challenged and championed, we warmly invite you to visit us. Come and discover a place where excellence is expected, character is formed, and Christ is at the centre of all we do.

Visit [olsc.org.uk](http://olsc.org.uk) to learn more.



## Our Lady and St Chad Catholic Academy

### Open Evenings

Thursday 11th September  
18:00 - 20:00

Thursday 2nd October  
18:00 - 20:00

Scan to view our  
prospectus online



### Our Lady and St Chad Catholic Academy

Old Fallings Lane  
Wolverhampton  
WV10 8BL  
Tel: 01902 558250

 [olsc.org.uk](http://olsc.org.uk)

 [/ourlady.stchad](https://www.facebook.com/ourlady.stchad)

 [@OurLadyStChad](https://twitter.com/OurLadyStChad)



# Ormiston NEW Academy

**PRIDE, ENDEAVOUR, TOGETHER AND EXCELLENCE IS AT THE HEART OF EVERYTHING THE SCHOOL DOES, CREATING AN ENVIRONMENT WHERE EVERY LEARNER CAN THRIVE**

We are delighted to invite prospective students and families to our upcoming Open Events for 2025 at Ormiston NEW Academy, based in Wolverhampton, where our commitment to **Pride, Endeavour, Together and Excellence** is at the heart of everything we do.

These values have been fully embraced by our students, transforming our culture and creating an environment where every learner can thrive.

Since 2019, under the leadership of our dedicated Principal, Mr Cooling, our Academy has gone from strength to strength.

Rated 'Good' by Ofsted in 2022, we are proud of the high standards



and expectations we uphold.

Our newly updated house system now reflects and reinforces our core values, further strengthening the sense of community and belonging across the Academy.

With more students joining us than ever before, it's an exciting time to be part of our journey.

We look forward to welcoming Year 6 pupils and their families to our main Open Evening on Tuesday 30th September, from 5pm–8pm.

Additional open mornings will take place on Tuesday 7th October and Thursday 9th October, with tours available from 9am–10am and 12pm–1pm.

Come and experience the pride we take in our achievements, the endeavour shown by our students, the strength of working together, and the pursuit of excellence that drives our academy forward.



2025  
**OPEN DAYS**  
[www.onewa.co.uk](http://www.onewa.co.uk)

OPEN EVENING  
Tuesday 30th September 5-8pm  
OPEN DAY TOURS  
Tuesday 7th & Thursday 9th October  
9-10am & 12-1pm

**Ofsted**  
Good  
Provider

# The Khalsa Academy

## UNLOCKING POTENTIAL AT THE KHALSA ACADEMY WOLVERHAMPTON

**The Khalsa Academy Wolverhampton (TKAW) is a Sikh ethos school that seamlessly combines academic excellence with student wellbeing, welcoming children from all faiths and backgrounds.**

Led by Principal, Mr Sukhdev Shoker, TKAW ensures that students gain the knowledge, skills, and values essential for success in their communities and beyond.

TKAW's exceptional GCSE results place it as the top non-selective school in Wolverhampton for progress (P8 +0.56), and the school continues to achieve strong A-level results at Khalsa Sixth (Value Added +0.17).

With an inclusive environment, outstanding facilities, and an ambitious curriculum, particularly in digital and STEM skills, students are well-prepared for future success.



“Our school is dedicated to providing unparalleled opportunities for our students,” said Mr Shoker.

“We strive to foster a learning environment where every student can thrive and reach their full potential.”

At TKAW, students are set ambitious targets within a broad and balanced curriculum, empowering them to excel academically and pursue higher education or high-level apprenticeships.

The school is also a centre of excellence for computer science, hosting the Computing at Schools (CAS) Hub and offering first-class teacher training.

With high expectations, exemplary student behaviour, and a robust pastoral system, TKAW nurtures well-rounded individuals ready to contribute to their communities.

Join us at TKAW, where we create endless opportunities for our students and nurture the leaders of tomorrow.



The Khalsa Academy  
Wolverhampton



# OPEN EVENING

Thursday 25<sup>th</sup> September 2025

5pm - 7pm

## OPEN MORNINGS

29<sup>th</sup> Sept - 1<sup>st</sup> Oct 9am - 11am

Millfields Road, Ettingshall,  
Wolverhampton, West Midlands,  
WV4 6JP

**Sikh Ethos  
Based Education**

# Moreton School

## UNLOCK YOUR CHILD'S POTENTIAL AT MORETON SCHOOL: A COMMUNITY COMMITTED TO EXCELLENCE

At Moreton School, we are dedicated to creating an ambitious environment that empowers every student to excel academically and personally.

Our vision is to equip students with the skills and opportunities necessary to secure meaningful next steps in life, ensuring they have the best possible life chances. We strive to provide a school that our community can be proud of.

Why Choose Moreton School?

### 1. Ambitious Learning

**Environment:** Our curriculum is knowledge-rich, fostering critical thinking and a passion for learning. Experienced educators deliver engaging lessons tailored to meet the diverse needs of our students, ensuring that each child is challenged and inspired.

### 2. Holistic Development: We



believe in nurturing the whole child. Our comprehensive support system includes academic mentoring, emotional well-being programmes, and career guidance.

**3. Inclusive Community:** We are committed to providing an inclusive and supportive environment for all learners regardless of their background or ability.

### 4. Rich Extracurricular

**Opportunities:** We offer a wide range of extracurricular activities, from sports teams and music ensembles to clubs focused on art, science, and technology.

### 5. Strong Community

**Engagement:** Moreton School prides itself on being a cornerstone of the community. We actively engage with parents, businesses, and community leaders to create a network that enhances student learning and development.

Join us at Moreton School, where we create opportunities every day and build a school that our students and wider community can be proud of.

For more information about our programmes, admissions, and upcoming events, please visit our website or contact us directly. Together, we can shape a brighter future for your child.

# Moreton School OPEN DAY EVENTS

You can expect:

High quality teaching to ensure students achieve their fullest potential.  
A dedicated and effective pastoral team to support all students.  
A passionate teaching team committed to every students' learning.  
A purposeful environment for all children to thrive in.  
Enrichment opportunities for all.

This is just a small part of what Moreton has to offer for your child. Year 6 families come and see us in our open events to see this in action and the other amazing reasons to join our school.

**WEDNESDAY**

24TH SEPTEMBER, 2025

4PM - 7PM

**TUESDAY**

30TH SEPTEMBER, 2025

5PM TO 7PM

**LIMITED MORNING  
TOURS**

16TH - 18TH SEPTEMBER



SCAN THE QR CODE OR VISIT OUR  
WEBSITE FOR BOOKING EDTAILS

[www.moreton.aatrust.co.uk](http://www.moreton.aatrust.co.uk)

"Striving for MORE"



# Aldersley High School

**A GREAT EDUCATION STARTS WITH AMBITION, IS ONLY ACHIEVED THROUGH HARD WORK, AND ULTIMATELY, STAFF ARE HERE TO WORK WITH YOU TO MAKE SUCCESS INEVITABLE**

**You're looking for the best education possible for your child, and we've got the recipe.**

AHS stands for Aldersley High School, but those three letters also summarise our plan for your child: Ambition. Hard Work. Success. We believe that a great education starts with Ambition, is only achieved through Hard Work, and ultimately, we are here to work with you to make Success inevitable.

Aldersley High School continues to be one of the strongest schools in the city, consistently judged as 'Good' for more than a decade, with results that are always among the highest. But we're hungry for more, and AHS also stands for Always Higher Still, our commitment to continually improving to better serve our community.

Aldersley benefits from fantastic



facilities, excellent teaching, and limitless opportunities for its students. Situated in extensive and attractive grounds, we have outstanding music, performing arts, and sports facilities, along with great spaces for art, design, and the sciences. Our comprehensive curriculum and extracurricular activities aim to cultivate cultural capital and enrichment.

We start and finish with our highest

priority: to ensure that children achieve well. We emphasise the importance of fostering a safe, harmonious, and inclusive environment where students feel valued and respected. Our commitment extends to supporting students with special educational needs, ensuring they are challenged and stretched to achieve their best.

At Aldersley, we believe in preparing students for adult life by instilling in them the values of responsibility, respect, and active participation in the wider community.

Aldersley has something for everyone, and we look forward to showing you more soon. Join us in our journey of ambition, hard work, and success, and let's make the future bright for your child together. Visit our website to book your tickets at [www.aldersley.aatrust.co.uk](http://www.aldersley.aatrust.co.uk)

## ALDERSLEY HIGH SCHOOL OPEN EVENING

**THURSDAY**  
**25<sup>TH</sup> SEPTEMBER, 2025**  
**4PM - 7PM**

At Aldersley, a great education begins with Ambition, grows through Hard Work, and leads to Success. We offer a safe, inclusive environment where every child is supported to thrive. Visit our vibrant campus, meet our dedicated staff, and explore the outstanding facilities that help shape bright, ambitious futures.

**LIMITED MORNING TOURS**  
**30<sup>TH</sup> SEPTEMBER - 2<sup>ND</sup> OCTOBER**



SCAN THE QR CODE OR VISIT OUR  
WEBSITE FOR BOOKING EDTAILS  
[www.aldersley.aatrust.co.uk](http://www.aldersley.aatrust.co.uk)

"AMBITION  
HARD WORK  
SUCCESS"



# HOW WILL YOUR CHILD GET TO THE NEW SCHOOL?



**Once you know where your child will be studying next September, you will need to consider how they are going to get to school. Are they going to walk, catch a bus, or be dropped off by car?**

If their new secondary school is just around the corner, it should be within easy walking distance of your home. However, if it's further away, your child may be catching the bus for the first time by themselves.

Alternatively, you might find it easier to drop them off in the car on your way to work.

If your child will be walking to their new school, you need to think about whether they will go alone, with friends, or if someone will walk with them.

As the nights start drawing in, make sure they can be clearly seen when walking to and from school.

It's worth buying reflective high-visibility stickers to put on their school bags.

You may want to accompany your child at first until they are familiar with the route and you feel comfortable letting them go alone or with friends.

If the school is further away, your child may be entitled to free transport up to the age of 16.

To qualify, they need to attend the nearest suitable school, which must be further away than the statutory walking distance of three miles for pupils aged eight or older.

Statutory walking distance is measured by the shortest route a child, accompanied if necessary, can walk with reasonable safety.

If there is no such route, the local authority must provide free transport, regardless of how far you live from the school.

The local education authority or governing body may provide transport, hire coaches, or issue free bus or train passes for use on public transport. In some cases, a travelling allowance may be paid to pupils who provide

their own transport, such as a cycle allowance.

Pupils who do not qualify for free transport may be allowed to travel on spare seats on school buses for a fee.

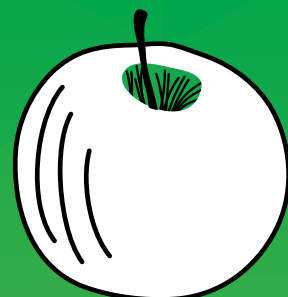
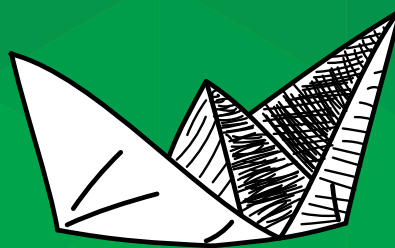
Your local council can provide information on available transport options and any support offered.

If your child will be taking public transport, practising their route before the start of term may help to calm any nerves. This will help them get used to leaving the house on time and making it to the bus stop.

Whether it's public transport or a bus provided by the council or school, it's important to have a backup plan in case your child misses their lift.

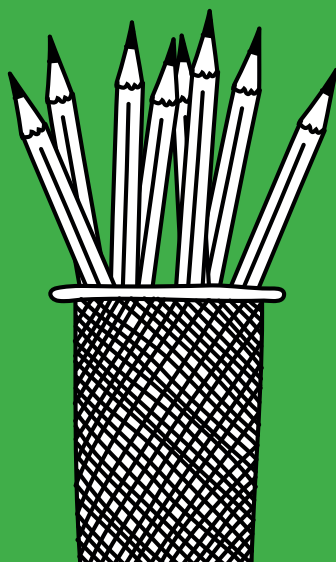
Make sure they know what to do in such situations, whether it's calling you or another relative, or taking a taxi.

If they need to take a taxi, ensure they have 'emergency money' to pay for it and that they understand its purpose. It should be kept in a secure place in their bag.



# Dudley

Including:  
STOURBRIDGE  
HALESOWEN  
WYRE FOREST



# Dudley Academies Trust

## MORE THAN A TRUST

**The four secondary schools that are members of Dudley Academies Trust have a combined positive Progress 8 measure and continue to improve levels of attainment.**

They have all come a very long way since 2017 when the Trust was established. Our aspirant culture and excellent climate for learning mean that our learners are happy and can flourish.

### Seven years of progress and success

Jo Higgins, Chief Executive Officer of Dudley Academies Trust, expressed her delight at the advances the Trust has made, she said: "I am extremely proud of the immense progress our secondary academies have made in the seven years that we have been operational."

### Gold standard

All four have improved on the gold standard GCSE measure of Grade 5 plus in both English and Mathematics and in one case by a massive 21 per cent.

There has also been a clear improvement in the number of learners achieving the higher grades, seven to nine. In two academies, almost 20 per cent of learners achieved this in English.

It is absolutely tremendous to see learners gaining up to nine Grade 9s or equivalent.

### Looking ahead

Both of the Trust's primary schools have achieved excellent SATS results with all key measures above the



national benchmark for both expected progress and greater depth. Blowers Green is one of the top performing schools in the borough.

As we welcome additional primary schools in years to come, we will be able to greatly increase our contribution to the educational outcomes and life chances of children in Dudley and the surrounding areas.

Meanwhile, we have successfully worked with the Department for Education to prioritise the rebuilding of Beacon Hill Academy, and we hope to announce the start of this scheme later in the year.

In addition, The Link Academy was awarded £100,000 grant by the Wolfson Foundation which has



transformed its Science and Design Technology facilities.

"One project from which I am particularly keen to see the results is the Sherwood Ranger light aircraft that our learners are building at the Institute of Technology.

"When it is finished, it will have a range of 200 miles, so we really will be able to say that our learners can go a long way in life!

"I am confident that our academies will continue to make great strides forward over the coming years and that your child will find every opportunity to thrive with us and to develop as a rounded and confident young person. We want your child to 'dream big' and to know that many positive life choices are within reach."





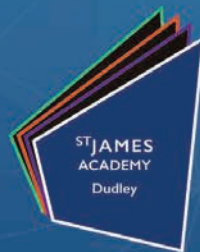
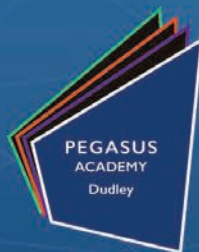
# More than a school More than a Trust

**Dudley Academies Trust is a now a well-established, successful Trust providing comprehensive support for all our schools so that they can flourish. We are committed to ensuring that all our young people have a high-quality education that will give them the foundations they need for a fulfilling life and a rewarding future career.**

Our learners are fantastic young people who tell us they feel happy, safe and well cared for in our schools. If your children join one of our academies in September 2025, we will help them to be the best that they can be.

## **Our academies benefit from:**

- A focus on personal development as well as results.
- An award winning careers programm.
- Collaborative Learning in the classrooms, so that every learner joins in, gains confidence and learns how to express their own ideas.
- Highly effective learner support, in and out of the classroom, with an emphasis on mental health and wellbeing.
- Support from the Trust's large and experienced central team of subject directors and subject coaches.



# Pegasus Academy

**A PLACE WHERE PUPILS CAN DREAM BIG AND ACHIEVE**

**The six consecutive years of improved GCSE results at Pegasus Academy would be a major achievement for any school.**

Results have made big advances in the core subjects of English, mathematics and science, with improvements being made across the board.

Results though, only tell half of the story. The leadership team at Pegasus Academy is on a clear mission to continue transforming the school by appointing the very best teaching staff, pushing for improvement in every area and encouraging their learners to 'Dream big' about their futures.

Staff are determined to broaden learners' horizons, increase their self-confidence and strengthen their life skills.



The aim to encourage and help each child to be the best that they can be.

Good behaviour is a key ingredient. Every school has a behaviour model, but this one is different. It focuses on opportunities for learners to be rewarded. Perhaps that is why attendance at Pegasus has been less affected by COVID than many other Dudley secondary schools.

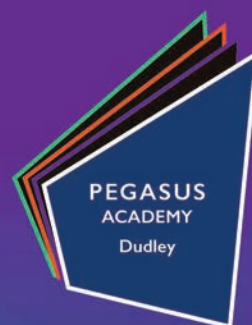
Of course, there are sanctions for learners who break the rules. This cuts out the behaviour that prevents learners from learning, that wastes time in the classroom and distracts attention from the subject being studied.

In and out of the classroom, learners and teachers agree that the behaviour model is a massive plus point for Pegasus Academy.

At the same time, a considerable effort has gone into making the academy environment into something that inspires and motivates out learners, with improvements having been made to the classrooms in every block of the school.

There is a new attitude among learners at Pegasus and a conviction across the academy that will continue to make good progress over the years to come.

## More than a school Discover your future



### Pegasus Academy offers:

- An award winning careers programme.
- An encouraging and inspirational atmosphere characterised by excellent attendance.
- Incredible personal development opportunities.

*Come to our open evening*

Thursday 2nd October 2025, 17:30 to 20:00.

Principal's talks: 17:45 and 18:45.



# St James Academy

**AN INCLUSIVE AND AMBITIOUS ENVIRONMENT WHERE YOUNG PEOPLE GROW AND DEVELOP INTO CONFIDENT YOUNG ADULTS WITH HIGH LEVELS OF AMBITION**

**St James Academy is an inclusive and welcoming school.**

Principal Ian Moore at St James Academy takes a personal approach, making an effort to learn the names and personalities of each and every learner.

Staff and learners are proud of the diverse cultures represented and the rich mixture of backgrounds.

“Life Chances for all learners” sits at the heart of the academy and is evidenced daily through high ambition for learners both academically and in the delivery of important life skills.

The performance of each learner is recorded and actively monitored on a week-by-week basis. Staff know which learners might need more support and provide support and challenge in order to ensure that each learner is given the best chances in life.



This approach has transformed learner performance, but many other aspects of what learners experience are equally positive. Independence and key skills around preparation for public examinations are taught in order to support our ambitious and articulate learners.

Learners are challenged to extend their interests through a wide programme of extra-curricular activities, sports teams, trips and

visits. The careers programme helps learners to focus on their futures and motivates them to work hard and develop their self-confidence.

The Principal and Senior leaders are consistently visible around the school, talking to learners about their lessons, their other activities knowing the young people at the academy.

Learners have plenty of opportunities to pursue other interests, as the academy has large playing fields and excellent facilities for sport and drama.

St James Academy makes a real difference to the lives of young people, their families and the community which we serve. It is an inclusive and ambitious environment where young people grow and develop into confident young adults with high levels of ambition.

*More than a school*  
**Discover your future**



**An inclusive and welcoming school.**

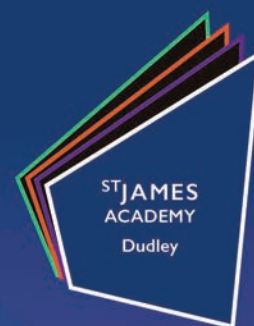
Ofsted rated 'Good', June 2024



*Come to our open evening*

Thursday 18th September 2025, 17:30 to 20:00.

Principal's talks: 17:45 and 18:45.



# Beacon Hill Academy

**THE SCHOOL HAS DESIGNED AN INCREASINGLY AMBITIOUS CURRICULUM WHICH IS TAUGHT WITH HIGH LEVELS OF CONSISTENCY**

Beacon Hill Academy is on a continued mission to develop an inspirational school that instils ambition and desire in its learners, opens their minds, widens their horizons, and equips them to succeed in a challenging world.

The marked rise in the proportion of learners achieving Grade 5 or higher in both English and Mathematics is a very good indicator of the advances made across the academy.

Having made significant improvements to every aspect of academy life and performance over the last five years, the Senior Leadership Team at Beacon Hill is determined to ensure that the academy continues to go from strength to strength.

Staff want learners to enjoy their



time at the academy, to feel safe, to feel supported and to make excellent progress as a result.

There is a passionate belief that every young person matters and that every learner has a wide array of talents that must be identified and nurtured.

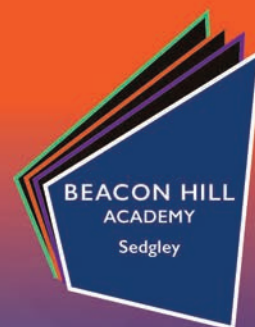
This is an academy with a mission to give each individual learner a choice of ways forward in life. It runs a wide range of programmes focusing on

careers, leadership, volunteering, personal and social responsibility, confidence building and personal development.

Recently, learners have participated in public speaking and poetry recitation competitions, full-scale dramas, musicals, dance, STEM competitions, entrepreneurship competitions and a broad range of extra-curricular clubs, teams and activities. Learners are able to participate in additional activities including engineering, art, science, dance, the Duke of Edinburgh scheme and a variety of sports.

Beacon Hill Academy offers a rounded education that will open young people's eyes to the opportunities available in the wider world if they study hard and give themselves something to aim for.

*More than a school*  
**Discover your future**



“  
**Where everyone goes the extra mile for their pupils.**”

Ofsted rated 'Good', May 2024



*Come to our open evening*

Tuesday 7th October 2025, 17:30 to 20:00.

Principal's talks: 17:45 and 18:45.



# The Link Academy

## A SCHOOL ON A MISSION TO GO FROM 'GOOD' TO 'OUTSTANDING'

**The Link Academy is led by Emma Edwards-Morgan, a former learner of the school herself, she is locally raised and rightly proud of her journey back to The Link!**

She and her strong Senior Leadership Team are determined to regain an outstanding status and are committed to changing lives among the young people of Netherton and the surrounding area. Now that the academy has been judged 'Good' in all areas, parents can be assured that The Link Academy gives every child the best possible opportunities to progress.

The Principal summarises the approach at The Link Academy as follows, "We build on areas of strength to improve outcomes for all learners, quickly identifying and dealing with any areas of weakness and accelerating learner attainment.



"We have steadily increased the levels of outstanding teaching in the academy and have placed a strong emphasis on the English and Mathematics skills that underpin every subject. A £100,000 grant from the Wolfson foundation for the refurbishment of Science and Design Technology facilities had enabled us to make even greater strides forward in these subjects."

A key part of the recipe is raising learner confidence, developing

their future career aspirations and increasing their knowledge of career options.

Understanding what they are aiming for in the future motivates learners and helps them to dream big about what they can achieve in life.

Learners are rewarded for their efforts to realise their ambitions on a daily basis! They are also rewarded for acts of kindness and helpfulness and for anything that upholds the academy's values.

The Link has excellent sporting and performing arts facilities that support a broad range of extra-curricular clubs, teams and other activities. As Ofsted said, learners access "a wide and rich set of experiences" as well as "high quality careers advice and guidance".

In the words of the principal – "We are very confident that our academy has a great future."

*More than a school*  
**Discover your future**

“  
**High ambitions are seen in all aspects of school life.**”

Ofsted rated 'Good', February 2022



*Come to our open evening*

Thursday 25th September 2025, 17:30 to 20:00.

Principal's talks: 17:45 and 18:45.



# The Dormston School

**A SCHOOL WHERE EVERYONE IS DESERVING OF AN EXCELLENT EDUCATION, SHOULD AIM HIGH AND BE GIVEN THE OPPORTUNITIES TO BE THE VERY BEST THAT THEY CAN BE**

**At Dormston, the basics underpin everything they do.**

Their philosophy is simple: if students, parents, and carers work together, every child will be able to attain their absolute best.

Leaders and teachers share common values of Effort, Knowledge, Respect, Responsibility, and Resilience with students, working together to ensure students achieve their best.

Headteacher Caroline Sutton fully believes that partnership in all its forms is the key to success.

She said: "I am certain that parents and carers will share the high hopes and aspirations that the school has for its students.

"I believe that irrespective of background, everyone is deserving of an excellent education, should aim high, and be given the opportunities to be the very best that they can be.

"If you always try your best, no one will ask more of you.

"We expect Dormston students to be proud of what they achieve during their time with us and be proud of who they are.

"We want every student to be the very best version of themselves and uphold our core values of Effort, Knowledge, Respect, Resilience, and Responsibility.



"Teaching staff work hard to ensure that they plan and teach lessons that are challenging and engaging.

"Staff are monitored regularly to ensure that the students receive the education that is appropriate for them.

"Attendance is vital. If children aren't in school, they can't make the most of the learning and enrichment opportunities on offer to them.

"Our expectation is high. Poor attendance is always challenged.

"We encourage every student to have above 95% attendance and all pupils to aim for 100%.

"As always, we expect the highest standards of behaviour.

"Behaviour for learning is paramount. We are proud of our strong climate for learning.

"Students being polite and respectful to their peers is a given.

"We will not tolerate aggressive, abusive, or disrespectful behaviour in any form.

"Students at Dormston have the right to feel safe and happy and know that their learning is of the highest importance without disturbance or interruption from others.

"Our facilities are outstanding and complement our safe and supportive learning environment.

"Our theatre and sporting facilities are held in high regard both within the school and the local community.

"We believe that learning should extend beyond the classroom.

"To support this, we have a wide variety of extracurricular opportunities on offer to students.

"Duke of Edinburgh, house competitions, school productions, and sports clubs give a flavour of what is on offer.

"We look forward to welcoming you to Dormston!"





# Dormston School

*Knowledge is Strength*

## Open Evening 2025

Thursday 16th October  
6.00pm - 8.00pm

There will be opportunities to tour the school and meet students and staff

Tel: 01384 816395 [www.dormston.dudley.sch.uk](http://www.dormston.dudley.sch.uk)  
Mill Bank, Sedgley, Dudley, DY3 1SN



**THORNS**  
COLLEGIATE ACADEMY

**OPEN EVENTS**  
**18 SEPT**

**5:30PM - 8:00PM**

**20 SEPT**

**9:30AM - 12:30PM**



Scan this QR code  
to visit our website.  
**01384 987 973**  
[info@tca.shirelandcat.net](mailto:info@tca.shirelandcat.net)  
[thornsca.org.uk](http://thornsca.org.uk)

# Ormiston Forge Academy

## ORMISTON FORGE ACADEMY – TOGETHER, WE ARE FORGE

**Resilience. Aspiration. Respect.**  
These are the values that define life at Ormiston Forge Academy.

From the moment students join the Forge family, they are supported, challenged and encouraged to aim high, work hard and believe in their potential.

We are a school that believes in real outcomes and strong character. Our students are taught to believe in themselves, to take responsibility for their learning, and to be proud of their progress.

Guided by our dedicated staff, they grow into confident, capable young people who are ready for their next steps in life.

In April 2025, Ofsted confirmed what we already knew: Forge is a Good school. But it's more than that – it's a school where expectations are high, where teaching is purposeful,



and where every student is known, supported and valued.

Relationships are strong, and help is always available – but most importantly, we prepare our young people for a bright and successful future in a world that demands resilience and ambition.

We're inviting prospective families to see Forge for themselves at one of our Open Events this September:

Thursday 25 September, 6pm–9pm (last entry 8.15pm)

Saturday 27 September, 9am–12pm (last entry 11.15am)

Visitors will be welcomed at reception, introduced to their guide, and shown around the academy – meeting teachers, exploring our facilities, and hearing directly from students about life at Forge.

From our sixth form and sports teams to our science labs and performing arts spaces, you'll see what makes Forge a place to belong, to grow and to succeed.

On-site parking will be available, including designated spaces for disabled access. Come and experience a school built on values, driven by ambition, and proud of its community.

Find out more at [www.ormistonforgeacademy.co.uk](http://www.ormistonforgeacademy.co.uk)

ORMISTON  
**FORGE**  
ACADEMY

Resilience. Aspiration. Respect.  
**WE ARE FORGE**

## OPEN EVENING

For Year 6 pupils and parents – Year 5 also welcome!

**THURSDAY 25 SEPTEMBER**

from 6:00pm to 9:00pm (last entry at 8:15pm)

We're also pleased to offer our

**OPEN MORNING and school tours**

**OPEN MORNING ON SATURDAY 27 SEPTEMBER, FROM 9:00AM TO 12:00PM**

**Tours bookable for weeks commencing 29 September and 6 October**

Tours of the school must be booked in advance via the school office

[info@oatforge.co.uk](mailto:info@oatforge.co.uk) • 01384 566 598

**[OAT]**  
Ormiston Academies Trust  
AN OAT ACADEMY



# Haybridge High School

**A CARING SCHOOL WITH HIGH STANDARDS WHERE WE BUILD CHARACTER THROUGH OUR VALUES OF AMBITION, CREATIVITY, COMMITMENT AND INTEGRITY**

Haybridge High School is a happy school where we care about our students and support them to achieve their potential; our students leave us well qualified and well prepared for their next steps.

We believe that an education is more than just a set of qualifications.

Our curriculum allows students to succeed academically; our enrichment and extracurricular offer through the 'Character Academy' gives them the confidence and resilience to be good people with a strong moral compass that will guide them through their future.

Our 'Character Academy' includes a range of sports, extensive musical groups and clubs such as Gardening Club, Eco Committee, Lego Robotics, Warhammer... there is something for everyone!



All students are part of a House and compete throughout the year for the House Cup, winning House Points and engaging in a wide range of House Events.

Our approach to behaviour allows students to develop excellent learning habits and reinforces the importance of being kind. We are clear about our expectations of students and support them to meet these with kindness and warmth. As a result, at Haybridge, all

teachers can teach so that all students can learn.

Ofsted describes Haybridge as a school with 'high academic achievement, respectful behaviour and positive, caring relationships' where 'pupils are a delight' (September 2022).

Our school values underpin everything we do. In our community at Haybridge we show:

- Ambition by having a growth mindset
- Creativity by thinking outside the box
- Commitment by showing up physically and mentally
- Integrity by doing the right thing.

The calm corridors, high standards and warm relationships make Haybridge a unique and special place. Come and find out for yourself!



**HAYBRIDGE  
HIGH SCHOOL**  
PART OF THE FOUR STONES

## OPEN EVENING

### FOR ENTRY IN SEPTEMBER 2026

THURSDAY 18<sup>TH</sup> SEPTEMBER 2025 5.00PM - 8.00PM



For further information, please visit the school website: [www.haybridge.worcs.sch.uk](http://www.haybridge.worcs.sch.uk)  
Brake Lane, Hagley, Worcestershire, DY8 2XS



# King Charles I School

**A SCHOOL WITH A CARING, ACADEMIC ETHOS TO HELP DEVELOP STUDENTS' CHARACTER THROUGH THE CORE VALUES OF AMBITION, COMMITMENT, CREATIVITY AND INTEGRITY**

King Charles I School is part of The Four Stones Multi Academy Trust (MAT). We believe it is an inspiring place to study and work.

We are proud of our caring, academic ethos and how we develop students' character through our core values of ambition, commitment, creativity and integrity.

The achievement of our students is paramount, but we also know all our students as individuals. We are ambitious for every student, no matter what their background, prior attainment or needs.

We focus on inclusion and ensuring each student is seen as an individual. Our students are a credit to us and we are very proud of the example they set both in school and the wider community.

We complement our academic



curriculum with an extensive enrichment programme – 'The Character Academy.' From after-school sports activities and fixtures to a variety of House events, revision clubs, and international trips, we endeavour to cater to all interests and experiences.

We operate with a warm but firm approach to discipline, ensuring our students develop the habits necessary to be successful independent adults. Our students are a credit to us.

OFSTED stated that 'Students behave well in lessons and at social times, and they take a positive approach to their studies. Staff resolve any bullying incidents quickly, and students know who to turn to, and they feel safe.' (March 2023)

At King Charles I School, the caring culture enables students to do their best. We expect our students to:

- Work hard and do their schoolwork to the best of their ability.
- Get involved in all that the school has to offer, both in and out of the classroom.
- Attend school punctually, every day, and in full school uniform.
- Show respect and courtesy to those around them and to our school.

We look forward to welcoming you to experience what we have to offer during our open evening!



**KING CHARLES I  
SCHOOL**  
PART OF THE FOUR STONES



**OPEN EVENING  
FOR YEAR 7  
ENTRY IN  
SEPTEMBER  
2026**

**Thursday 25th September 2025  
5.30pm - 7.30pm, Borrington Road**

For further information and updates, please visit the school website: [www.kingcharlesschool.co.uk](http://www.kingcharlesschool.co.uk)

Borrington Site, Borrington Road,  
Kidderminster, Worcestershire, DY10 3 ED



# The Wordsley School

**A SCHOOL WHICH CARES ABOUT PEOPLE AND AIMS FOR YOUR CHILD TO ENJOY SCHOOL AND BE SUCCESSFUL**

The Wordsley School will be hosting its 2025 open evening on Wednesday 24th September 2025, which will support prospective parents/carers of pupils who may wish to join in September 2026.

Wordsley School aims to be a school that focuses on people and relationships. We are very inclusive and have high expectations for pupils, both academically and behaviourally. Staff at the school are committed to providing a high standard of education and care passionately about the academic and wider development of pupils.

At Wordsley, our aim is to find what each student loves to do and give them the opportunity to do more of it.

We expect a lot of our pupils in terms of their behaviour and uphold standards, as we believe every child deserves a calm and purposeful environment in which to learn.

Wordsley offers a full range of subjects at Key Stage 3, with the opportunity to then specialise at Key Stage 4.

While academic at its core, the curriculum offers opportunities to study the performing arts, sport, and technological subjects.

A thriving extra-curricular program further develops pupils' talents and interests. A wide range of trips and visits also provide opportunities beyond the classroom. This includes trips within the West Midlands, wider UK, and abroad.



Children at The Wordsley School are happy and well supported. We focus on understanding every individual's strengths and challenges so they can quickly and happily feel part of our school community. This is why we focus on the transition between Years 6 and 7, as we know how scary the move to 'big' school can be.

From the moment school places are offered, we are in touch. Visits to primary schools, transition days, and summer school are offered to help pupils be ready to join us.

Pupils with SEND are also offered additional opportunities to help them integrate and feel settled in their new

environment. We want to make pupils feel part of our community before they even join us.

We are so excited to be welcoming parents and carers to our school so that you can truly capture the essence of what makes The Wordsley School so very special within our community.

The open evening will provide you with an opportunity to meet with the Headteacher, Ashley Weatherhogg, a wide range of staff and pupils, and to see the amazing things that our young people achieve whilst they are with us.

This is such an exciting time to be joining our school, and owing to the school's success and popularity, 2021 saw the opening of our new English block, library, and sports centre, which has been built to support the increasing number of pupils who wish to be part of our thriving school community.

We are also offering open morning tours from Monday 29th September to Friday 3rd October 2025.

To reserve a place, please visit our website now or contact our school reception from Monday 8th September.

We look forward to welcoming you to our school.



# THE WORDSLEY SCHOOL



**"THERE HAS BEEN NO CHANGE  
TO THE WORDSLEY SCHOOL'S OVERALL  
JUDGEMENT OF GOOD" – Ofsted February 2024**

**Join our Open Evening on  
Wednesday 24th September 2025 5.30-8.00pm**



Open Morning visits available for you  
to book a place on the following dates:  
Monday 29th September -  
Friday 3rd October

**BELIEVE ACHIEVE INSPIRE**

"Wordsley School is inclusive and has high  
expectations for pupils' achievements and  
aspirations" -Ofsted

See our website for more information  
[www.wordsleyschool.co.uk](http://www.wordsleyschool.co.uk)

**The Wordsley School, Brierley Hill Road, Stourbridge, DY8 5SP 01384 816015**

# Invictus Education Trust

**PROUD TO BE A LEADING EDUCATIONAL INSTITUTION THAT IS DEDICATED TO PROVIDING PUPILS WITH AN EXCEPTIONAL EDUCATION AND ELITE EXPERIENCES**

Invictus Education Trust is proud to be a leading educational institution that is dedicated to providing our students with an exceptional education, unique opportunities and elite experiences.

With a focus on academic excellence, holistic development and a passion for unlocking our students' limitless potential, we stand at the forefront of educational innovation. Through our commitment to personalised learning, a wide array of enriching experiences, Invictus Education Trust offers a transformative educational journey that puts our students at the heart of everything we do.

**Academic Excellence:** As a Trust, we are committed to maintaining the highest standards of academic excellence. We take great pride in the fact that ALL of our schools have achieved an Ofsted rating of 'Good'.

This recognition reflects our unwavering dedication to providing our students with an outstanding education that equips them with the knowledge, skills and resilience needed to succeed in their future endeavours.

**Unique Experiences and Opportunities:** What sets Invictus Education Trust apart is our



commitment to offering unique experiences and opportunities that go beyond the traditional classroom setting.

We believe in fostering well-rounded individuals, which is why we provide an array of enriching experiences. From the Duke of Edinburgh Award to international trips, we empower our pupils to explore their interests, discover new passions, and develop vital life skills that will serve them well beyond their academic journey.

**Our Commitment to our Students:** At Invictus Education Trust, our students are at the heart of everything we do.

We understand that each pupil is unique, with individual strengths,

aspirations, and challenges. That's why we prioritise their holistic development, offering a perfect mix of academic challenge, pastoral care, and enriching experiences – a dedicated nurturing and inclusive environment where our pupils can thrive.

By joining Invictus Education Trust, pupils have access to exceptional education, unique experiences, and opportunities that will empower them to become confident, capable, and compassionate individuals ready to make a positive impact in the world. Together, we are shaping a brighter future for our pupils and communities.

Invictus Education Trust was created in March 2015 by a group of like-minded schools: Crestwood School, Ellowes Hall Sports College, Kinver High School, and Wombourne High School. Leasowes High School joined in Autumn 2016, and Pedmore High School in September 2018, further strengthening an already thriving Trust. In 2021, Rufford Primary School and Nursery became the first primary school to join our trust.

Invictus Education Trust is proud to be a leading educational institution dedicated to providing pupils with exceptional education, unique opportunities, and elite experiences.

**INVICTUS**  
Education Trust

**'EVERY GREAT STORY BEGINS HERE!'**

**LEARN WITH US, WORK WITH US, BELONG WITH US**



# 2025 OPEN EVENTS



**SCAN  
HERE  
TO BOOK**



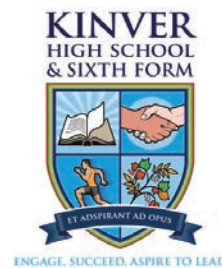
**Open Evening**  
Wednesday 17th September  
6-8pm

**Open Mornings**  
Friday 19th September  
Monday 22nd September  
Tuesday 23rd September  
9:30-10:30am



**Open Evening**  
Thursday 25th September  
4:00pm-7:00pm

**Open Mornings**  
Monday 29th September -  
Thursday 2nd October  
9:15am-10:00am



**Open Day**  
Saturday 20th September  
9:30am-1:30pm



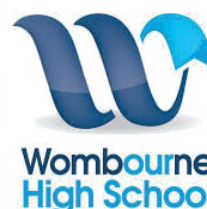
**Open Evenings**  
Wednesday 17th September  
Thursday 18th September  
6:30pm-8:30pm

**Open Mornings**  
Tuesday 23rd September  
Thursday 25th September  
9:15am-10:30am



**Pedmore  
High School**  
*Aspire, Persevere, Succeed*

**Open Evening**  
Thursday 2nd October  
6:00pm-8:30pm



**Open Evening**  
Monday 6th October  
4:30pm-7:00pm

**Sixth Form Open Evening**  
Monday 13th October  
4:30pm-7:00pm

# Crestwood School

**A SCHOOL WITH HIGH EXPECTATIONS AND STAFF THAT HELP STUDENTS TO ACHIEVE AMBITIOUS GOALS IN A SUPPORTIVE, POSITIVE AND INCLUSIVE ENVIRONMENT**

Crestwood School was delighted to receive a 'Good' Ofsted rating following an inspection in June 2023.

Ofsted said 'pupils feel happy and safe at school' and 'staff expect pupils to work hard, behave well, and participate in school life'.

Through our core values of 'Respect, Resilience and Relationships', pupils achieve ambitious goals in a supportive, positive and inclusive environment.

Our expectations and standards are high. As a result, students are stretched in their learning to ensure they achieve the very best qualifications. They are supported by our hard-working staff team, who go above and beyond so students feel happy, safe, and successful during their time at Crestwood.



We have a vibrant curriculum with access to a wide range of opportunities that allow all students, regardless of their ability, to fulfil their potential.

Our excellent reputation means that we continue to be oversubscribed. Students who show an aptitude

for either sport or performing arts can apply for one of our additional places offered through our 'Olympian' and 'Performing Arts' program. It is important to us that students at Crestwood feel valued and know they can make a difference. An extensive extra-curricular program, alongside opportunities for leadership and personal development, exposes students to experiences that will enrich their lives.

The state-of-the-art science block, alongside our swimming pool, 4G sports pitches, and professional theatre, means that students have access to the very best facilities of any school in the area.

We are delighted to welcome you to our open events throughout September 2025. We look forward to meeting you!



**INVICTUS**

Education Trust

**Oversubscribed for over 6 years!**

**Open Evening:** Wednesday  
17th September 6pm-8pm

**Open Mornings:** Friday 19th,  
Monday 22nd & Tuesday 23rd  
September 9:30am-10:30am



Scan here  
to book

**Telephone:** 01384 686850

**Email:** [info@crestwood-s.dudley.sch.uk](mailto:info@crestwood-s.dudley.sch.uk)

**Address:** The Crestwood School, Bromley Lane,  
Kingswinford, Dudley, West Midlands DY6 8QG



**Ofsted**  
Good  
Provider

**"Pupils feel happy and safe at school. They are keen to learn and want to do well"**

Ofsted

# Kingswinford Academy

**EVERY STUDENT DESERVES THE VERY BEST**

“Welcome to Kingswinford Academy, a beacon of academic and personal excellence,” says headteacher, Ian Moreton.

“I am incredibly proud to lead a school that is committed to unlocking the potential of every student.

“It’s a privilege to work alongside our young people and see them blossom into confident, successful individuals every day.

“Our school has experienced considerable growth and development since joining Windsor Academy Trust in 2016.

“Our exam results have seen a remarkable upward trend, and the range of extracurricular activities has broadened significantly, fostering a vibrant, dynamic



learning environment. Our site and facilities have been revamped and expanded, reflecting our commitment to provide the best learning conditions for our students.

“At Kingswinford Academy, we firmly believe that every student deserves the very best start in life. Our dedicated team works tirelessly to ensure our students receive just that.

“We have upheld a strong reputation for high academic standards and the wellbeing of our students.”

# Windsor High School

**COMMITTED TO DELIVERING THE VERY BEST EDUCATION AND UNLOCKING POTENTIAL**

Windsor High School in sixth form is a school committed to delivering the very best education for all students.

The school encourages every student to ASPIRE in their learning and lives so that they unlock their academic and personal potential.

Alongside inspiring teaching and learning and brilliant facilities, the school offers a welcoming environment for students built on traditional values and excellent pastoral support.

Well known for a strong



performance, the school was judged 'Outstanding' by Ofsted at its latest inspection in October 2024.

To find out more visit [Windsorhighschool.org.uk](http://Windsorhighschool.org.uk)



## Aspire to Excellence at Kingswinford Academy!

Join our vibrant community at Kingswinford Academy! Since becoming a part of the Windsor Academy Trust in 2016, we have strived to offer an exceptional environment for young people to learn, grow, and develop. Our rich blend of academically broad education and fulfilling extracurricular activities prepares our students for their future. Join our open events and witness how we unlock students' academic and personal potential every day.

Begin a fulfilling educational journey at Kingswinford Academy. Register for our Open Events today at [www.kingswinfordacademy.org.uk/news-and-events/open-events/](http://www.kingswinfordacademy.org.uk/news-and-events/open-events/)



## Excellence for All

“My son has gone from strength to strength since he started at Windsor and I cannot wait to see what he achieves next.”

-Year 7 Parent

### Visit our School

Open Evenings - Mon 22nd September & Wed 24th September 6-8.30 pm

Open Mornings - Tues 23rd September & Thursday 25th September 9.30-10.50 am



[www.windsorhighschool.org.uk](http://www.windsorhighschool.org.uk)

@windsor\_tweets



# Wolverley CE Secondary School

HELPING STUDENTS TO GROW NOT ONLY IN KNOWLEDGE BUT ALSO IN CONFIDENCE

Wolverley CE Secondary School is a thriving, ambitious and student-centred community where every individual is challenged and supported to reach their full potential.

We are proud of our wonderful environment, where students are at the heart of everything we do. Through our school CofE values and careful balance of high expectations, encouragement, personalised support and strong belief in our students we live out our motto of 'Ambition Unlimited'.

Our highly skilled and dedicated staff work



tirelessly to provide a wide range of academic and extracurricular opportunities, helping students to grow not only in knowledge but also in confidence, character and resilience. At Wolverley, we believe in empowering our young people to become the very best version of themselves – ready to flourish in the wider world.

**Wolverley CE Secondary School**

**OPEN EVENTS**

**Open Evening**  
Tuesday 23rd September 2025 5pm-8pm

**Open Morning**  
Wednesday 24th September 2025 9am-12pm

t: 01562 859800  
e: office@wolverley.worcs.sch.uk  
w: wolverley.worcs.sch.uk

Register your visit here



# ACE YOUR ADVERTISING

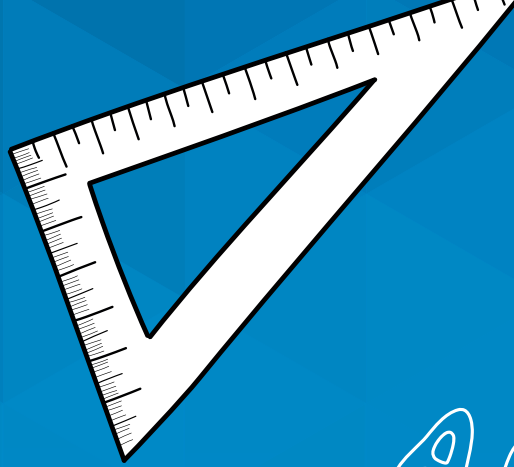
We've got the answers and we don't mind sharing

**Express & Star**

**chronicleweek**

**BIG SCHOOL** WHAT NEXT?

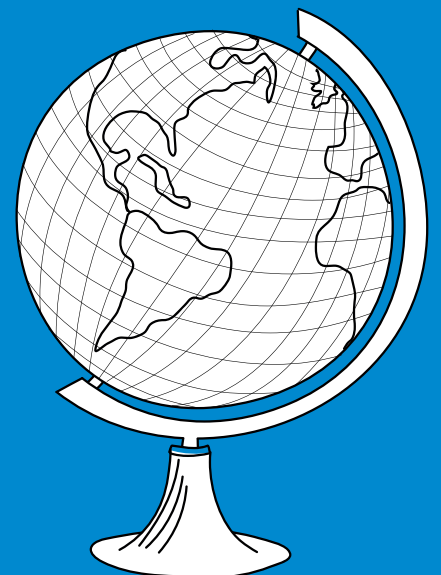
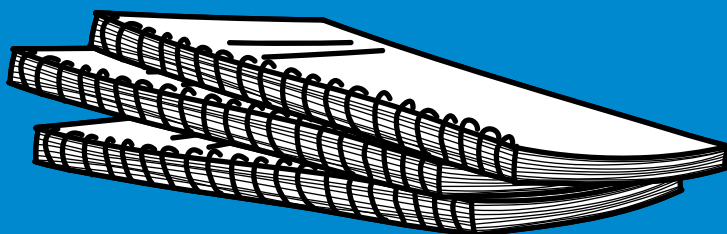
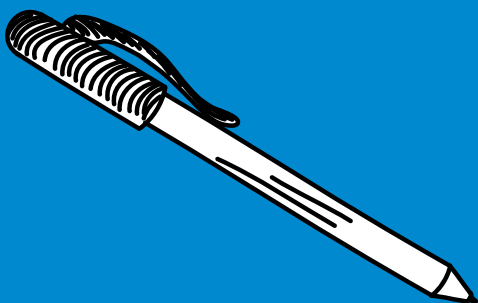
For speak with one of our experts contact **Tracy Baker** on 07435743995 or email [tracy.baker@nationalworld.com](mailto:tracy.baker@nationalworld.com)



ABC  
 $E = mc^2$

# Sandwell

Including:  
**BIRMINGHAM**  
**OLDBURY**  
**SMETHWICK**  
**WEDNESBURY**  
**WEST BROMWICH**



# Phoenix Collegiate

**BUILDING ON STRENGTHS OF STUDENTS TO ENSURE THAT THEY REACH THEIR POTENTIAL, WORK TOWARDS THEIR AMBITION AND MAKE A POSITIVE CONTRIBUTION TO SOCIETY**

Phoenix is a 'great' school, with an ever-improving reputation within the West Midlands.

As a school, staff follow the motto 'Broadening Horizons to Aspire, Believe, Succeed' to build on the strengths of our students to ensure that every student reaches their full potential, works towards their ambitions, and makes a positive contribution to society. We are one of the top-performing schools in Sandwell, with exceptional GCSE results over the past few years.

For Phoenix to continue its work towards being outstanding – currently, we are 'good' in every Ofsted area – staff will be looking at creating ever greater partnerships with parents/carers, as well as the whole community, including enhanced links with local businesses. Head teacher Mike Smith said: "I would encourage all members of the community, potential students, and parents/carers to visit the school during our September open events, to see our wonderful facilities and experience the special atmosphere here at Phoenix."

Our population is approximately 1,950 and is genuinely comprehensive. Almost 50% of students come from ethnic minority groups. By placing your children with Phoenix, you are choosing an environment that mirrors, as closely as possible, the diverse society in which we live and work.

**Facilities** – The general facilities have improved tremendously and are now in state-of-the-art buildings fit for an ever-changing world.

These include:

- General teaching rooms enhanced by specialist rooms
- 15 science laboratories
- 16 ICT suites
- Drama studios
- A hall with well-equipped retractable bleacher seating with sound and lighting systems
- A spacious sports hall plus two activity studios and a fully equipped dance studio



- 7 floodlit multi-use games areas
- 2 FA standard football pitches
- A refurbished all-weather running track and extensive playing fields.

Works are about to begin shortly on a new 3G all-weather pitch and a sports block with changing rooms, gym, clubroom and classroom.

**Staffing** – We have an exceptional team of teaching and support staff here at Phoenix who pride themselves on developing strong relationships with our students. We are a school which prides itself on high staff morale and very low staff turnover, as we invest heavily in their ongoing training and professional development.

**Curriculum** – Our curriculum offer here at Phoenix is broad and balanced. While many schools have cut back on the arts, sports, and vocational curriculum, this is something we continue to invest in. Our offer consists of a rich and varied extra-curricular programme that includes academic opportunities alongside a vast array of others, such as many sports and performing arts. At Phoenix, we provide free music peripatetic lessons to our students.

As part of our enrichment offer, we have the fastest growing Combined Cadet Force in the country, with a Royal Navy, Royal Air Force, and Royal Marine section at the school.

We also offer the Duke of Edinburgh's Award, which gives our students many skills and attributes that the job market looks for. To support this, we deliver our Phoenix Challenge, which enables students to develop their character education through a certified programme.

**Transition** – We recognise that any transition can be an anxious time, and this is never truer than when starting a new school. At Phoenix, we aim to empower students to positively manage all transition phases by making sure that they are informed and have appropriate experiences before starting secondary school with us. For new students coming into Year 7, we work closely with their primary schools. We invite all students to a two-day transition event during July, along with their parents/carers.

We have a dedicated primary transition transfer team of staff. You can contact this team by emailing [transition@phoenix.sandwell.sch.uk](mailto:transition@phoenix.sandwell.sch.uk). We look forward to welcoming you to one of our Open events in September:

### Open Events 2025

Open Evening: Thursday 18th September, 4pm – 7.00pm

Open Mornings: Monday 22nd September to Friday 3rd October, 9am – 11am (by appointment only)

# BOA Digital Technologies

**ACADEMY AIMS TO NURTURE RESPONSIBLE, AMBITIOUS AND CREATIVE YOUNG PEOPLE WHO ARE WELL-EQUIPPED TO THRIVE IN THE RAPIDLY EVOLVING DIGITAL SECTOR**

**BOA Digital Technologies is an 11–18 academy specialising in creative and digital technologies.**

Based in a state-of-the-art school, the academy is committed to developing students both academically and socially. Its aim is to nurture responsible, ambitious and creative young people who are well-equipped to thrive in the rapidly evolving digital sector.

The academy offers a distinctive approach to education – one that celebrates innovation, encourages creativity, and pushes the boundaries of traditional teaching.

Students are supported in a stimulating environment where they are challenged to think critically, explore ideas and embrace future-focused learning.

This September marks an



exciting new chapter for BOA Digital Technologies as Dr Jonathan Morris joins as the new Principal. With nearly 20 years of leadership experience in secondary education, Dr Morris brings extensive expertise. He is also a published academic and holds a Doctorate in Education, with a research focus on the organisational culture of schools.

Applications are now open for students wishing to join Year 7 in 2026. An Open Event will be held on Thursday 9th October (5pm – 7.30pm) at BOA Digital Technologies Academy, 47 Barrack Street, Birmingham, B7 4HA.

Prospective students and their families are invited to tour the cutting-edge facilities, meet current students and dedicated teaching staff, take part in interactive activities, and hear directly from Dr Morris about the academy's vision for the future. The event offers a chance to experience how learning is made both innovative and inspiring.

To register interest, scan the QR code on the academy's advert or email [info@boadigital.co.uk](mailto:info@boadigital.co.uk). For further details, visit [www.boa-digital.co.uk](http://www.boa-digital.co.uk).



## OPEN EVENING

Explore our state-of-the-art academy, meet our talented students, and connect with our passionate teaching staff. Take part in interactive activities and hear directly from our Principal about our vision for the future.

Come and experience how we make learning future-ready – and fun!

Our friendly staff and students will be on hand to answer your questions and share what makes life at BOA Digital so unique.

**Thursday 9<sup>th</sup> October 2025**  
5pm – 7.30pm

[www.boa-digital.co.uk](http://www.boa-digital.co.uk)  
 Search 'BOA Digital'

0121 359 9400





Scan the QR code to book, or find out more.



SHIRELAND  
COLLEGIATE ACADEMY

OPEN EVENT  
16 SEPT

4:00PM - 7:00PM



Scan this QR code  
to visit our website.  
0121 558 8086  
info@sca.shirelandcat.net  
collegiateacademy.co.uk





**SHIRELAND  
CBSO ACADEMY**

**OPEN EVENTS**

**17 SEPT**

**5:00PM - 7:30PM**

**20 SEPT**

**9:00AM - 11:00AM**



Scan this QR code  
to visit our website.

**0121 818 4620**

**info@scbso.shirelandcat.net**

**shirelandcbso.org.uk**





WEST BROMWICH  
COLLEGIATE ACADEMY

# OPEN EVENT 11 SEPT

4:30PM - 8:00PM



Scan this QR code  
to visit our website.  
0121 393 4850  
[info@wbca.shirelandcat.net](mailto:info@wbca.shirelandcat.net)  
[wbca.school](http://wbca.school)

Ofsted  
Outstanding  
in 3 categories



**SHIRELAND  
BIOMEDICAL**  
UNIVERSITY TECHNICAL COLLEGE

**OPEN EVENTS**  
**16 SEPT**

**4:00PM - 7:00PM**

**20 SEPT**

**10:00AM - 1:00PM**



Scan this QR code  
to visit our website.  
**0121 828 1123**  
**info@sbu.shirelandcat.net**  
**sbmutc.org.uk**



# Al-Burhan Grammar School for Girls

**A SCHOOL THAT EMPOWERS PUPILS TO ARTICULATE THEIR FEELINGS AND THOUGHTS, WHILE ALSO TEACHING THEM EMPATHY AND COMPASSION**

**Al-Burhan provides a high-quality education intertwined with a strong focus on personal development.**

Supporting pupils to achieve their full potential: "Given the chance, I would do it all over again – I wouldn't change a single aspect of her time at Al-Burhan." (Parent)

The School has "an ambitious curriculum taught by staff with strong subject knowledge" (Ofsted, 2025).

Pupils study the full breadth of the national curriculum and are supported to make continuous progress to achieve their full potential:

"Pupils respond exceptionally well to these high expectations. They achieve highly across the curriculum and academic standards are consistently strong." (Ofsted 2025).

In 2024 GCSEs:



■ 100% of pupils achieved 5 or more Grades 9-4 including in English and Maths

■ 49% of all GCSEs grades achieved were grade 7-9

■ Attainment 8 score of 69.4 (compared to local average of 46.3, and England average of 45.9)

"I have been to ten schools altogether and I can only say that out of the 10, Al-Burhan had the most impact on me and allowed me to embrace my faith whilst studying." (Pupil)

The extended Islamic education focuses on exploring faith, developing understanding and linking teachings to daily life. Pupils recognise that our faith enriches us, making us balanced and morally upright people.

"The school has a strong moral purpose...and guides pupils to know the difference between right and wrong, and to think of others... A culture of reflection and learning from mistakes helps to build pupils' character and resilience" (Ofsted, 2025).

"Our daughter thrived and enjoyed life in the school every day. To this day, she misses not going to Al-Burhan." (Parent)

For more information: [www.alburhan.org.uk](http://www.alburhan.org.uk). Contact us to arrange a visit or book an entrance test which will be held on 6th December 2025.

## Al-Burhan Grammar School

An Independent School for 11- 16 year old girls



**Entrance Test  
Date for  
September 2026**  
Saturday 6th December 2025

### Excellent GCSE Results

"Pupil's high levels of achievement, coupled with informed careers guidance, enables them to make ambitious plans for their futures. This sets them very well to make most of their excellent education" - Ofsted 2025

"The school has a strong moral purpose and community spirit. It guides pupils to know the difference between right and wrong and to think of others" - Ofsted 2025

"A culture of reflection and learning from mistakes helps to build pupil's character and resilience"

For more details:

**Spring Road Centre**  
**258 Spring Road**  
**Birmingham, B11 3DW**

**Outstanding  
School  
(Ofsted 2025)**

### Subjects taught:

Maths, Triple Science, Computer Science, RS, English Lang and LIT, History, Urdu, Art and Arabic

**Tel: 0121 440 5454**

[www.alburhan.org.uk](http://www.alburhan.org.uk) | [info@alburhan.org.uk](mailto:info@alburhan.org.uk)



[www.facebook.com/AlBurhanGrammarSchool](https://www.facebook.com/AlBurhanGrammarSchool)

# Perryfields Academy

**A VIBRANT AND INCLUSIVE SCHOOL THAT AIMS TO BUILD CHARACTER AND DEVELOP OPPORTUNITY FOR EVERYONE, GIVING OUR STUDENTS THE TOOLS TO ACHIEVE EXCELLENCE**

**Perryfields Academy passionately believes in serving our community and investing in our children's future.**

Whether it be through free uniform, personal Chromebooks for all students or just free breakfast for those who need it, we aim to provide everything needed to learn in a vibrant and inclusive school.

Whilst we go through the process of redeveloping our site and building a new school fit for the future, we also aim to build character and develop opportunity for everyone, giving our students the tools to achieve excellence.

Our proactive and caring approach to developing positive outcomes for our students has been recognised by Ofsted, our approach to international cultural understanding recognised by the British Council, and our dedication



to nurturing our student's passion for their environment recognised by Eco Schools and Keep Britain Tidy.

In just the last year Perrys pupils have been on a football tour of the Netherlands, visited parliament and performed at Stourbridge Town Hall, they are encouraged to be creative thinkers who are imaginative, resourceful and resilient. We support their desires to support others through fundraising efforts and donations to

Black Country Foodbank, we even have a representative on the UK Youth Parliament.

They receive an inspiring and engaging education, supported by passionate and committed teachers, delivering a broad and balanced curriculum designed to enhance the development of our students with both subject specific and transferable skills.

Underpinning our culture of ambition is a strong and supportive pastoral system. The promotion of positive mental health and wellbeing encourages our learners to unlock their potential.

We welcome students of all abilities to become part of a culture where ambition and the values of good behaviour, honesty and mutual respect are the hallmarks of school life.

We're investing in our children and our community, let us invest in you.



[WWW.PERRYFIELDSACADEMY.CO.UK](http://WWW.PERRYFIELDSACADEMY.CO.UK)



**CHROMEBOOK, UNIFORM & PE KIT  
FOR EVERY STUDENT**



**PERRYFIELDS  
ACADEMY**



# Windsor Olympus Academy

## AN INCLUSIVE AND NURTURING COMMUNITY

In the heart of Winson Green, the award-winning Windsor Olympus Academy is thriving as it enters its third successful year.

We are immensely proud of our students' fantastic results, which showcase our mission to unlock academic and personal potential.

In our vibrant, technologically-driven learning environment, every student is equipped with their own iPad to enhance their studies and creativity. Beyond the classroom, our students are making a real difference, earning community awards for their positive local impact.

We are more than just a school; we are an inclusive



and nurturing community where every student feels valued and motivated to thrive.

Our open events are the perfect opportunity to explore our state-of-the-art facilities, meet our dedicated staff, and experience the dynamic energy that makes our school so special.

Join us and take the first step on an exciting educational journey.

Thriving Together at  Windsor Olympus Academy



**JOIN AN AWARD-WINNING SCHOOL, THRIVING TOGETHER**  
at Windsor Olympus Academy



Sign up for our Open Events today at <https://www.olympusacademy.org.uk/apply/open-events/>

Now thriving in our third successful year, we're proud of our students' fantastic results. At our technology-driven school, every student receives a personal iPad. Beyond academics, our students earn community awards for their positive local impact. Join our open events and discover how we blend tradition and innovation to shape a brighter future.

[info@olympus.windsoracademytrust.org.uk](mailto:info@olympus.windsoracademytrust.org.uk)



**OPEN EVENING**  
**Monday 22<sup>nd</sup> September**  
**5:00 pm - 7:00 pm**

- Headteacher Introduction 5:15pm and 6:15pm.
- Opportunity to speak to staff and students.
- Tour of the school.
- Prize giving.

**New Build.  
New School.  
New Opportunities.**

[joinus.oldburyacademy.com](http://joinus.oldburyacademy.com)




**Proud to be a 'GOOD' school**

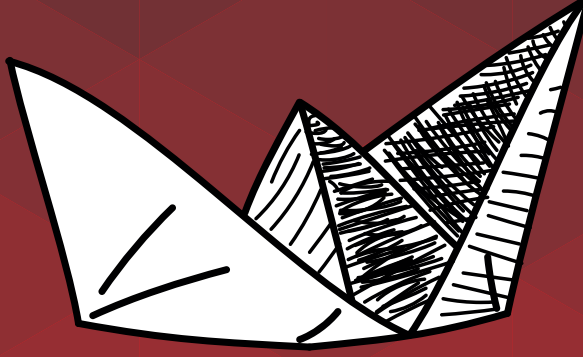
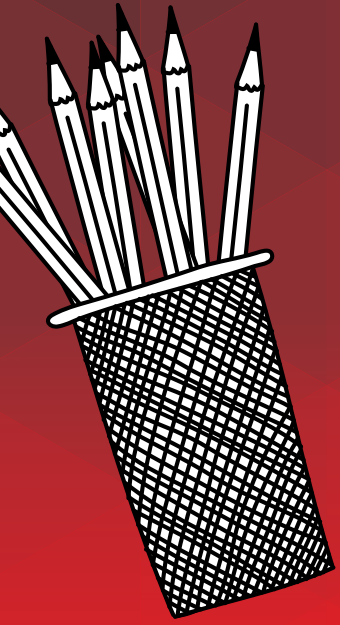


SCAN ME

# BIG SCHOOL



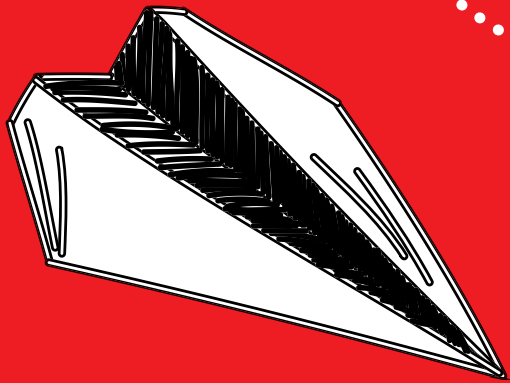
- OPEN DAYS
- TYPES OF SCHOOLS
- OFSTED EXPLAINED
- ADMISSIONS PROCESS
- SCHOOLS BY REGION



$$a^2 + b^2 = c^2$$

# Staffordshire

Including:  
CANNOCK  
RUGELEY  
LICHFIELD  
STAFFORD  
NORTH STAFFS



# The Hart School

**THE HART SCHOOL OFFERS A CAREFULLY CRAFTED CURRICULUM TO ENABLE PUPILS TO SUCCEED AS INDIVIDUALS BOTH WITHIN AND BEYOND ITS NURTURING WALLS**

The Hart School has an ambitious vision: To deliver an educational experience which empowers all pupils to step confidently into the world of work and further education armed with the knowledge and skills to succeed.

As it continues on its steadfast journey to being brilliant, the Creative Education Trust school on the edge of Cannock Chase in Rugeley has a lot to be proud of. With an enviable reputation built upon its motto of “We Can, We Will, We Do”, it takes great pride in nurturing and developing pupils’ strengths, skills, and talents, both inside and outside the classroom, to enable every student to succeed as individuals within and beyond its nurturing walls.

Not one to rest on its laurels, it has continued to significantly invest in improving what is already an impressive offer year on year. An extensive landscaping project behind the main school building is now complete and was officially opened at the end of June, and, as its reputation for excellence in dance continues, a new purpose-built dance studios is set to open for the new academic year in September.

**The Hart School is proud to empower students to be the very best that they can be**

A popular choice of secondary school for Year 6 parents in Staffordshire, it not only continues to win high praise for creating a carefully crafted curriculum across all year groups, but also for delivering



a bespoke curriculum for every sixth form intake to ensure students excel on their chosen career path.

Principal Ms Rachael Sandham said: “It’s an honour to be The Hart School Principal. Every day I’m impressed with the hard work and commitment of our staff, students and whole school community.

“Our vision at the Hart School is ‘We Can, We Will, We Do’ and together we work to our core values of happy, ambitious, resilient and tolerant.

“This personal growth empowers each student to be the very best they can be, attaining the highest possible academic standards as happy, well-rounded young people ready to make a positive contribution to our global community. I’m incredibly proud of

our carefully crafted curriculum and extensive extracurricular opportunities that provide the opportunity for all pupils to succeed within their own skills, talents and strengths.”

**Passionate about helping all pupils to achieve their full potential**

She added: “We are very passionate about providing the best possible learning opportunities and experiences for all students irrespective of their strengths, challenges or needs so that all pupils can achieve their full potential in a harmonious, inclusive and welcoming environment. I’m looking forward to continuing to work alongside our pupils, parents and staff to ensure that we continue to build on all our successes as we work towards being a brilliant school.”

Prospective parents are invited to attend its open day event to see the breadth of what it has to offer on Thursday, October 2, with three sessions for visitors to look around at 4pm, 5pm or 6pm.

For more on The Hart School, rated good by Ofsted, please visit [www.hartschool.org.uk](http://www.hartschool.org.uk), email [enquiries@hartschool.org.uk](mailto:enquiries@hartschool.org.uk) or stay updated with the school and pupils’ ongoing successes on Facebook @ [thehartschool](https://www.facebook.com/thehartschool)





THE HART  
SCHOOL  
*Creative  
Education  
Trust*

We look forward to seeing  
you soon at our  
**oversubscribed school**  
and showing you why  
**The Hart School is**  
*the number one choice*  
for parents.

**Open Event**

Thursday 2nd October 2025

[www.hartschool.org.uk](http://www.hartschool.org.uk)

[enquiries@hartschool.org.uk](mailto:enquiries@hartschool.org.uk)

01889 802440

*Follow us on:*



**WE CAN • WE WILL • WE DO**

# Great Wyrley Academy

## SCHOOL AIMS TO UNLOCK STUDENTS' ACADEMIC AND PERSONAL POTENTIAL

**Great Wyrley Academy is a school that helps students achieve their full potential.**

The school focuses on more than just academic success. It aims to unlock students' academic and personal potential, encouraging students to participate in a huge range of extracurricular activities.

Great Wyrley Academy offers a warm and welcoming environment built upon a culture of respect, responsibility and shared values. Students settle in quickly, make friends, and enjoy their time at school. This was one of many strengths highlighted in the



recent Ofsted report where it was noted that "pupils feel safe at school. They build strong, positive relationships with their peers and their teachers". The Academy's "Good" Ofsted rating serves as a testament to its success in creating a welcoming and enriching educational environment.

Visit the website at [greatwyrleyacademy.org.uk](http://greatwyrleyacademy.org.uk)

# Cheslyn Hay Academy

## DISCOVER YOUR POTENTIAL AT CHESLYN HAY

**Cheslyn Hay Academy is a thriving 11-18 comprehensive school, part of the esteemed Windsor Academy Trust.**

With approximately 1,300 students, including the vibrant Aspire Sixth Form of 200, we are dedicated to unlocking the personal and academic potential of every individual.

At Cheslyn Hay, we believe in providing unparalleled opportunities for students to thrive. Whether it's through our vast array of sports clubs, the excitement of performing on stage, expressing creativity through our amazing DT and Art department or taking part in local or international trips



and visits there's a pathway for every passion. We foster an environment where high expectations run hand-in-hand with these diverse opportunities, ensuring that every student is challenged and supported to excel.

We look forward to welcoming you to our school for an open evening or open morning. Visit [cheslynhayacademy.org.uk](http://cheslynhayacademy.org.uk)



Looking for a secondary school that helps your child achieve their full potential?

### Discover Great Wyrley Academy

*"Our son really struggled with the transition from primary school to secondary school, but, with the help and care from staff and teachers at Great Wyrley Academy, he has now settled in well and turned himself around, achieving his best work. The support has been amazing, and he knows that he can ask for help when and if he needs it. He has now joined two after school clubs, football and choir, and made so many new friends. School is now a positive place rather than somewhere he doesn't want to be." - Year 7 Parent*

Visit:

[greatwyrleyacademy.org.uk](http://greatwyrleyacademy.org.uk)



**Open Evening - Thursday 25 September 2025**

**Open Mornings - 30th September, 1st & 2nd October 2025**  
9:30am -10:40am & 11:00am -12:00pm

@WyrleyAcademy



## High Expectation High Achievement

*"My boys have truly flourished at Cheslyn Hay, growing into polite, thoughtful, and hardworking young men who can comfortably converse with anyone. This is a powerful testament to the school's environment and the self-belief the teachers have nurtured in them"*

Year 13 parent

**Join Our Open Evening  
24th September 2025**



Visit:

[cheslynhayacademy.org.uk](http://cheslynhayacademy.org.uk)



# Cannock Chase High School

**A VIBRANT AND AMBITIOUS LEARNING COMMUNITY WITH A RELENTLESS FOCUS ON THE HIGHEST STANDARDS OF ACADEMIC ACHIEVEMENT AND PERSONAL DEVELOPMENT**

Cannock Chase High School is an 11-19 state-funded comprehensive school with Academy Status and over 1,100 students on roll.

Our school is a vibrant and ambitious learning community with a relentless focus on the highest standards of academic achievement, personal development and equality of opportunity. In everything we do, we are dedicated to reaching our school goal – 'Achievement for All'.

Underpinning everything we do at Cannock Chase High School are our values that we expect all members of our community to demonstrate in all they do: Integrity, Teamwork, Responsibility, Excellence and Resilience.

Our core business is putting the best teachers in front of students to ensure the best academic standards. Key elements of our strategy include:



- Highly personalised training programmes based on the very best research to ensure teaching practice is evidence-informed, reflective and effective;
- Offering a curriculum that is broad, balanced and fully inclusive, with a wide range of appropriate and challenging courses to suit the needs of our students;
- Ensuring students are knowledgeable by continually revisiting ideas so

that learning is long-term;

- Fostering confident, independent learners by providing regular opportunities for students to deliberately practise in lessons;
- Providing effective assessment feedback where students have the opportunity to respond to and engage with the feedback to improve their work;

Cannock Chase High School operates a strong and effective pastoral system based upon traditional values of respect, manners and good behaviour.

To help with transition, we have planned extensive KS2 to KS3 events such as visits to and from primary schools, two transition days and a one-week free summer school. For enquiries, email [j.simpson@cannockchasehigh.com](mailto:j.simpson@cannockchasehigh.com), call 01543 502450, or visit [www.cannockchasehigh.com](http://www.cannockchasehigh.com).



## CANNOCK CHASE HIGH SCHOOL

A C H I E V E M E N T F O R A L L



(inspected June 2023)



# OPEN EVENING

**WEDNESDAY 24TH SEPTEMBER 2025 AT 6PM**

*"School leaders have created a calm, well-ordered environment in which pupils can thrive" (Ofsted, 2023)*

Tel: 01543 502450 [www.cannockchasehigh.com](http://www.cannockchasehigh.com) [@CCHSofficial](https://twitter.com/CCHSofficial) [facebook.com/CCHSofficial](https://facebook.com/CCHSofficial)

INTEGRITY

TEAMWORK

RESPONSIBILITY

EXCELLENCE

RESILIENCE

# Taking on a new challenge

**When your child starts secondary school, there are a wealth of opportunities open to them.**

From the age of 14, young people can work towards earning The Duke of Edinburgh's Award.

Whatever their ability, interest or background, DofE offers young people the chance to strive for achievement, overcome obstacles, and set their minds to a personal challenge.

Many schools will run a DofE programme with three progressive levels which, when successfully completed, lead to a Bronze, Silver or Gold award.

Not only is it an opportunity to discover new interests and talents but it's also a recognised mark of achievement; respected by employers.

Any young person can do their DofE – regardless of ability, gender, background or location.

Each young person builds their own DofE programmes – picking their own activities and choosing which



cause to volunteer for – in order to achieve a Bronze, Silver or Gold DofE Award.

The DofE is run in schools, youth clubs, hospitals, fostering agencies, prisons, sports clubs and more, all over the UK and internationally.

There are four sections to complete at Bronze and Silver level and five at Gold.

They involve helping the community/environment, becoming

fitter, developing new skills, planning, training for and completing an expedition and, for Gold only, working with a team on a residential activity.

In 2023/24, 330,984 young people started their DofE, giving 4.7 million hours of volunteering to their communities.

The DofE charity has increased its target to give 1.6 million young people the chance to participate in a life-changing DofE programme by 2026.

## Staffordshire University Academy



Staffordshire University  
Academy

# OPEN EVENING

Wednesday 1<sup>st</sup> October  
6:00pm - 8:30pm

## OPEN MORNINGS

Monday 6<sup>th</sup> October to  
Friday 10<sup>th</sup> October  
9:00am - 10:30am



SCAN ME

# The Rural Enterprise Academy

**A DISTINCTIVE SECONDARY SCHOOL COMBINING TRADITIONAL ACADEMIC EXCELLENCE WITH A STRONG EMPHASIS ON ENVIRONMENTAL AND LAND-BASED EDUCATION**

**A truly distinctive secondary school offering a dynamic, environmentally-focused curriculum that inspires and challenges every student.**

“I love the hands-on learning and being outdoors. I’ve made lifelong friends, and the teachers have made me feel really welcome” – Ellie-Mae Wall, student

At The Rural Enterprise Academy, we combine traditional academic excellence with a strong emphasis on environmental and land-based education. Our curriculum includes core subjects such as English, Maths, Science, Humanities, and PE, alongside creative and technological studies, including IT.

What sets us apart is our commitment to environmental learning. Students explore subjects like forest



school, environmental science, and animal care – developing a deep understanding of the natural world.

We offer a broad, ambitious curriculum that not only prepares them for future careers, but also equips them to engage thoughtfully with the environmental challenges of today. We nurture a wide range of essential skills that prepare our students for life beyond the classroom. These include:

■ Critical thinking and problem-solving, through real-world

environmental challenges

■ Teamwork and communication, developed through collaborative outdoor projects

■ Leadership and independence, encouraged through enterprise activities and hands-on learning

■ Creativity and innovation, inspired by our focus on sustainability and land-based industries

■ Resilience and adaptability, built through active learning in dynamic, natural settings

Our students are passionate about making a difference. We support them with a broad and ambitious curriculum that not only prepares them for future careers but also empowers them to become thoughtful, capable, and confident individuals. At The Rural Enterprise Academy, we don’t just teach – we cultivate potential.



## THE RURAL ENTERPRISE ACADEMY

**OPEN EVENING: Thursday 2nd October 5pm-7pm**

"Educating, nurturing and inspiring our future rural entrepreneurs. Creating a culture that is kind, where everybody can be successful."



• A specialised curriculum focusing on a range of academic and vocational subjects

• A small secondary school where every student is known, valued and inspired to reach their full potential

• A number of transport routes offered to all areas around the school

[enquiries@ruralenterpriseacademy.com](mailto:enquiries@ruralenterpriseacademy.com) | 01785 333360



# ACE YOUR ADVERTISING

We've got the answers and we don't mind sharing



**Express & Star**

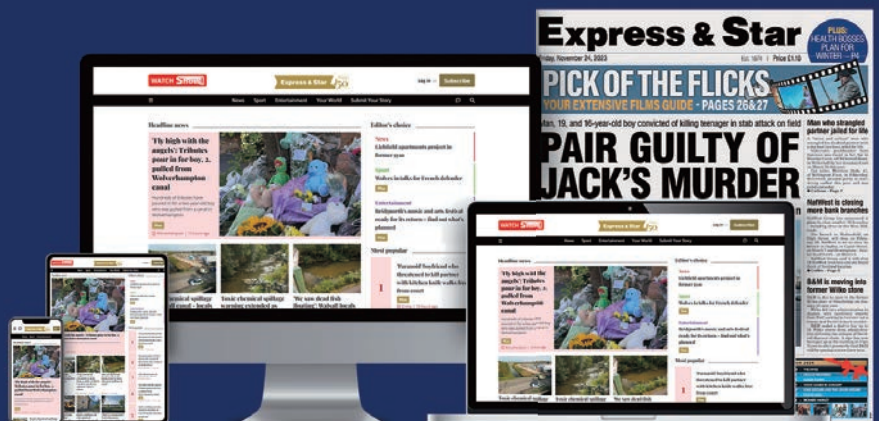
**chronicleweek**

**Big  
SCHOOL**

WHAT  
NEXT?

Brought to you by

**National World**



For speak with one of our experts contact

**Tracy Baker on 07435743995 or email [tracy.baker@expressandstar.co.uk](mailto:tracy.baker@expressandstar.co.uk)**



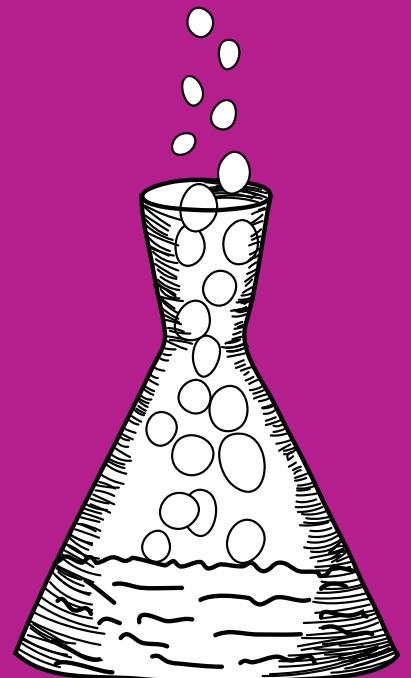
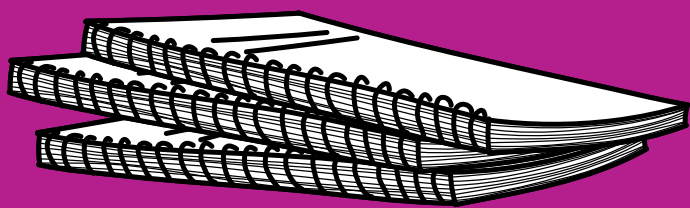
$$3 + 5 = 8$$



# Walsall

Including:  
BROWNHILLS  
ALDRIDGE

ABC  $E = mc^2$



# E-ACT West Walsall Academy

**A SCHOOL THAT STRIVES FOR EXCELLENCE AND TAKES PRIDE IN ITS STUDENTS, STAFF AND COMMUNITY**

**At E-ACT West Walsall Academy we pride ourselves on ensuring that every student 'Strives for Excellence'.**

We want to develop our students into good, kind, creative, and ambitious young people, not only through providing a quality academic provision but also seeking out opportunities for our students to excel and develop their cultural capital and pursue their interests.

Our students are encouraged to 'Do the Right Thing' through supporting each other, show kindness towards one another and to promote integrity. Our students 'Show Team Spirit' through celebrating our diversity, taking on leadership roles within the academy and participating in regular inter-form competitions.

Our value of 'Think Big' reminds us



of the importance of being ambitious and enterprising to really achieve the very best that we possibly can, and we believe that everyone can achieve!

Our final value of 'Be Proud' ensures that our students are always reminded of the community we serve, the academy they attend and strive every day to ensure that both staff and students are proud to be members of our E-ACT family. This permeates through pride in our uniform, pride in

our work and pride in our community.

Our curriculum is broad and balanced. We offer a range of subjects across all stages, where our students have access to a range of opportunities that enable them to make informed decisions about their next steps. We offer a range of extra curricular activities including drama and music performances, sports clubs, creative clubs as well as opportunities to visit universities and industry.

We have a passionate belief that every student, no matter who they are or where they are from, deserves the very best education for them to follow their aspirations and goals.

The staff have a genuine care about our students and the families we serve and go above and beyond to ensure that every student receives the very best they can.

YOU'RE  
**INVITED**

> to explore our academy!

Thursday

18th September 2025

3.30pm - 7pm

**WW**

West Walsall  
E-ACT Academy

**STRIVE FOR EXCELLENCE**

<https://westwalsallacademy.e-act.org.uk/>  
West Walsall E-ACT Academy  
Primley Avenue, Walsall, WS2 9UA  
01922 662640

# Walsall Academy

## WALSALL ACADEMY: A THRIVING COMMUNITY WHERE STUDENTS FLOURISH

**At Walsall Academy, we believe in the power of education to change lives.**

Our mission is to empower every student to unlock their full potential – academically, personally, and socially – and become confident, compassionate citizens ready to shape the future. At Walsall Academy our aim is for “Everybody to be a somebody”.

We are a warm, inclusive and oversubscribed school with a culture built on high expectations and mutual respect. When Ofsted visited us in 2022, they praised our students for treating each other fairly and valuing individual differences – testament to the strong, respectful relationships at the heart of our school community.

Our ambitious and inclusive curriculum enables all learners to succeed. We are proud to count



Oxbridge, Arkwright, and Rank Foundation scholars among our students – just one example of the high aspirations we nurture every day. Many of our alumni return to inspire the next generation, either as guest speakers or staff members.

Walsall Academy stands out for its outstanding careers and work experience programme, delivered in close partnership with local employers. An impressive 98% of our Year 13 students go on to employment, further

study or apprenticeships.

Beyond the classroom, our bespoke Character Education programme builds essential life skills, including resilience, teamwork, communication and creativity. Students enjoy a wide range of enrichment opportunities, from residentials and theatre trips to sporting events, eco-initiatives and performing arts.

As one recent Oxford undergraduate put it: “To me, Walsall Academy means a community of wonderful staff and students that has enabled me to reach my academic potential, pursue my passions and develop as a person.”

We invite you to come and see the difference for yourself. Find out more at: [www.walsallacademy.com](http://www.walsallacademy.com).

Deadline for applications: 31 October 2025.



## WALSALL ACADEMY

Contact the Academy for details about the New Year 7 Information Evenings which will be held in the Autumn Term



For more information contact us for an application pack or visit [www.walsallacademy.com](http://www.walsallacademy.com) or scan the QR code on your mobile

Lichfield Road Bloxwich Walsall WS3 3LX  
Telephone: 01922 493910  
[www.walsallacademy.com](http://www.walsallacademy.com)  
[admissions@walsallacademy.com](mailto:admissions@walsallacademy.com)



# Blue Coat C.E. Academy

**A SCHOOL COMMITTED TO DEVELOPING CHILDREN AS INDIVIDUALS WHILST PROMOTING CHRISTIAN VALUES OF WISDOM, ENDURANCE, SERVICE, KINDNESS AND HOPE**

**Blue Coat Church of England Academy has a long standing and proud history in Walsall, with the school's origins dating back to 1656.**

The Blue Coat Foundation has an impressive record of providing excellent Christian education for students. We serve a wide and diverse community and are recognised as a good and continually improving school, committed to developing children as individuals whilst promoting our Christian values of wisdom, endurance, service, kindness and hope.

Our strong Christian ethos is central to all we aspire to achieve and as a community we thrive on developing positive relationships and building mutual respect. This was recognised during an Ofsted



inspection in January 2023 which reported: "Blue Coat Church of England Academy is an inclusive school where kindness flourishes. There are positive relationships between staff and pupils.

"Staff know their pupils well, and pupils feel cared for."

We hold high expectations for all students and encourage students, to make the most of their talents, whilst also enjoying the challenge of

mastering new or existing skills.

We have high expectations of everyone at Blue Coat and we strive to continually enhance the Academy as a learning community, looking for ways to develop and improve, embracing new technology and adapting to the demands of the modern world. We are always looking for ways to learn from past experiences to build a better future. This is the basis of our motto, "Respice Prospice" meaning "Look backward. Look forward".

We are confident that the Christian ethos and values, on which the school is founded, provide a secure foundation for success and fulfilment.

We would be delighted to welcome you to our Open Evening which will take place on Thursday 2nd October 2025 (4.45 – 7.00pm). The Principal's talk will be at 5.00pm.



## Our Values

Wisdom, Endurance,  
Service, Kindness and Hope

Blue Coat Church of England Academy is an inclusive Christian learning environment where the uniqueness of each individual is celebrated, nurtured and realised.

All members of the school community are encouraged to achieve the highest standards and become full contributors to society as confident and caring individuals.

**Our open evening will take place on  
Thursday 2nd October 4.45pm - 7pm**  
Principal's talk at 5pm followed by school tours.



**Blue Coat Church of England Academy**

**Birmingham Street, Walsall, West Midlands, WS1 2ND**

**Website: [www.bluecoatacademy.org](http://www.bluecoatacademy.org)**

**Email: [postbox@bluecoatacademy.org](mailto:postbox@bluecoatacademy.org) Phone: 01922 720558**

# Brownhills Ormiston Academy

## A GREAT SCHOOL CLOSE TO HOME

**At Brownhills Ormiston Academy, we believe every child deserves a complete education – one that develops character, stretches ambition, and opens doors to a life of opportunity.**

We are proud to serve the Brownhills community as the school of choice for families who value high expectations, hard work and excellent outcomes. With a culture built on respect, readiness and pride, Brownhills Ormiston Academy sets clear expectations and supports every student to succeed.

“Our students have one chance at their education – and we all have a duty to make it count,” says Principal Mr R. T. Doodson.

A love of learning is at the heart of everything we do, and it begins with language. We are a reading school – because the more we read,



the more we know. Literacy is central to our curriculum and nurtures the confidence, curiosity and knowledge that helps every learner thrive.

From academics to sport and the performing arts, Brownhills Ormiston Academy offers a truly rounded education. Students benefit from excellent facilities including a new MUGA, swimming pool, two sports halls and a 350-seat theatre. Annual shows, concerts, fixtures

and enrichment activities help pupils discover their talents and passions.

As part of Ormiston Academies Trust, our students are connected to a wider network of schools committed to opportunity for all. Whether your child dreams of university, college or skilled employment, they will leave us prepared for their next step – confident, respectful and ready to succeed.

■ Open Evening: Tuesday 23rd September 2025

■ Book your place at one of our Open Mornings:

Friday 26th September

Tuesday 30th September

Thursday 2nd October

Call 01543 452 886 to reserve a place.

**Brownhills Ormiston Academy – Be proud, respectful and ready to succeed.**



**A great school close to home**

# OPEN EVENING

at **Brownhills Ormiston Academy**

For Year 6 pupils and parents – Year 5 also welcome!

## Tuesday 23 September

From 6:00pm to 8:30pm

**We are also pleased to offer OPEN MORNINGS on**

Friday 26 September, Tuesday 30 September and Thursday 2 October

To attend, please book in advance via the school office.

Brownhills Ormiston Academy, Deakin Avenue, Brownhills, WS8 7QG  
postbox@brownhillsoa.co.uk • brownhillsoa.co.uk • 01543 452886



# The Way Youth Zone

WHERE YOUNG PEOPLE BELONG AFTER SCHOOL

**As parents and carers, we all want the same for our children – to see them happy, safe, and supported as they grow.**

But when the school day ends, the hours until bedtime can often be tricky. For many families, the hours after school can be a juggle – with parents rushing to drive children from one club to another, or young people left at home in front of a screen, or with nowhere safe to meet up with their friends.

That's where The Way Youth Zone makes a real difference. We're accessible, affordable, and open to all – a welcoming space where every young person feels they belong.

Based in Wolverhampton, The Way is a safe, welcoming space for young people aged 8–18, open every weekday evening, all year round.

For just £5 a year and 50p per visit, it offers a wide variety of opportunities and activities that give young people independence in a supportive environment.

For Amber, a bright and bubbly 12-year-old, coming to The Way has been life-changing. "I used to be the shyest person on earth," Amber admitted. Making friends was daunting, but Junior sessions transformed her confidence.

"Now, I've made tons of friends. It's helped me so much – my confidence has grown so much!" she beamed.

Amber has tried new sports, discovered a love for climbing,



explored her creative side, and learned to cook in the training kitchen.

Most importantly, she's found a place where she feels excited, confident, and connected.

And Amber isn't alone. Every visit to The Way gives young people access to over 20 activities each evening – from sports and a climbing wall, to arts and crafts, music, games and cooking. Whether they're active, creative, or just want somewhere to relax with friends, there's something for everyone.

To make sure young people are fuelled for the evening ahead of them, they can have a free hot meal in our fantastic cafe.

At the heart of The Way are our professional youth workers – trusted adults who are there to listen, encourage, and guide. They help young people build confidence, resilience and important life skills, while making sure they always feel welcome and supported.

For parents and carers, The Way also brings peace of mind. You can feel reassured knowing your child is spending their evenings somewhere safe and positive – rather than in front of a screen or out on the streets.

Every child is different, which is why The Way offers so much choice. With state-of-the-art facilities, dedicated staff, and an inclusive atmosphere, The Way really is unique – and it's right on your doorstep. Find out more at: [www.thewayyouthzone.org](http://www.thewayyouthzone.org)

Because after school shouldn't just be about passing time – it should be a chance to thrive.



# When lessons end, we're just getting started...

The Way Youth Zone gives young people a safe, welcoming, and exciting place to be every evening.

From sports to arts, music to climbing walls, cooking to chilling with friends – there's something for everyone.



# 50p

per visit

Open from 4pm every weekday evening for young people aged 8-18, and every Saturday for families.



£5 annual membership

FREE hot meal every visit

Over 20 activities every evening

A place to make friends and build confidence

Our trained youth workers are always on hand to support, listen and encourage.

[www.thewayyouthzone.org](http://www.thewayyouthzone.org)

📍 School Street,  
Wolverhampton  
WV3 0NR

☎ 01902 328290

Find out more



# THEWAY

An OnSide Youth Zone



**CITY OF  
WOLVERHAMPTON  
COLLEGE**

**Free\***  
courses for  
adults



# It's never too late to learn!

**Looking for work or  
want to retrain?**

**Already working and  
want to study part-time?**

**Career-focussed courses:**

- ➔ Part-time courses
- ➔ Access to Higher Education
- ➔ Higher education
- ➔ Skills bootcamps
- ➔ Preparation for work programmes
- ➔ Careers advice and guidance

*Courses start throughout the year.*

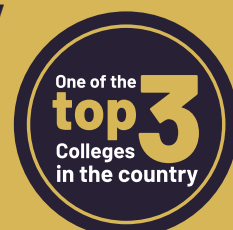
**Visit an Open Event...**

For times and dates and to book your place visit [www.wolvcoll.ac.uk/events](http://www.wolvcoll.ac.uk/events)

...or apply online anytime  
[www.wolvcoll.ac.uk/apply](http://www.wolvcoll.ac.uk/apply)

**NEW**

**City Learning Quarter campus  
- opening autumn 2025!**



**DEFINING FUTURES**

\* Free courses subject to eligibility criteria

\* Top 3 in General Further Education Colleges. Refers to National Achievement Rates Tables (NARTs) 2023/24 - published March 2025.